



Annual Review 2020-2021



Wolston and Centenary Catchments Incorporated. ABN: 71 255 469 038 100 Wolston Road
Wacol, Queensland 4076

Email: info@wacc.org.au Website: www.wacc.org.au

President's Report

This was my first year as President of WaCC and I have enjoyed moving into the role. Previously, I had been Secretary from 2014 to 2019. During 2020 I took a year off committee responsibilities and remained mostly in the background. Our previous President, Katrin (Kat) Lowe moved interstate to carry on environmental work in her favourite field. We are grateful for Kat's strong commitment and management of a number of habitat rehabilitation projects.

The past twelve months had been very busy and productive for WaCC, despite a few COVID-19 disruptions. We managed to continue with administrative responsibilities via our monthly committee meetings. Our projects continued through support from our state and local government grants as well as some generous donations. The Pooh Corner Environment Centre (PCEC) ran as usual with just a few bookings having to be rearranged. With the support of BCC and a new member who is keen to manage the site, WaCC added a new catchment site 'Newcomb Park'.

Fortunately, with the support of members and volunteers, we have been able to navigate around COVID-19 lockdowns and restrictions. WaCC hosted a range of community events with few of them being disrupted. The use of Queensland Government QR Codes for WaCC events became routine, that is, following our initial steep learning curve.

WaCC organised a number of events and participated in the Peaks to Points celebrations with a stall at the Community Day and hosting two walks. Aside from Peaks to Points, we co-hosted the Queensland University of Technology (QUT) annual Student Catchment Immersion Project (SCIP) working bee which was a great success as were the working Bees held at Pooh Corner Bushland Reserve, Owen Stanley Place, Darra and the Wacol Bushlands also at Darra. At our planting events, volunteers planted more than 1300 plants. WaCC registered with Planet Ark, for a National Tree day planting. This event was the most affected by a lockdown but on the brighter side we thank HP Australia for donating the cost of the plants for the event.

Our annual World Environment Day celebration was organised with Centenary Districts Environment Action (CDEA) and our Brisbane City Council Jamboree Ward Councillor, Sarah Hutton. It was a bigger event this year attracting a greater number of families. The success of this event was due to Councillor Sarah Hutton's tremendous support which made the day a great success. Thank you to Sarah and CDEA committee members who planned this event over a number of weeks.

Challenge Employment, through the Skilling Queenslanders for Work Program did an amazing amount of weeding and planting throughout our catchments. The PCEC was used for their training workshops. WaCC is so thankful for their efforts and endless energy during 2020 and early this year. The trainees graduated at a morning tea at the PCEC in March this

year. The success of this Program was evident in that the majority of the students gained environmental related jobs even before they graduated.

I would like to thank the management committee for their efforts over the past year. You are each essential to the success of our group and I would like to thank you all for your hard work and commitment to WaCC's objectives and ideals.

Julie Vejle as our Vice-President has brought a wealth of experience and knowledge both as being an executive committee member and in managing the Wolston Creek Bushland Reserve (WCBR) natural habitat regeneration project. Julie can regularly be found working in this Reserve at Riverhills.

In the later half of 2020 we welcomed a new Secretary, Cassy and Treasurer, Anna who were two very welcome additions to our team. Our governance and administration responsibilities have been efficiently carried out by Cassy and Anna. Thank you both for keeping the organisation running within our legal and legislative requirements.

In the roles of PCEC Co-ordinator and committee member Ed Parker has continued to keep the facility well maintained and operating smoothly as the home base for WaCCs operations and for use by other community organisations. We greatly appreciate the comfortable centre we have, mainly due to Ed's efforts.

We welcomed Matthew Fry to our Team as our Information Technology person. Matthew's skills in this area have been a timely very important contribution to sorting out our WaCC Website. Managing the Website had moved beyond our Team's skill set. Matthew has also been very actively participating with the Centenary Village Platypus Habitat Enhancement Project. He has brought together local residents and fostered their interest in participating, protecting and enhancing the platypus habitat along the local waterways.

Many more volunteers make up the WaCC community and we have been fortunate to have their assistance. I would like to thank you all for helping WaCC stay connected with the community, especially in these difficult times. A big thank you also goes out to our BCC Creek Catchment Officer, Adam Richardt. He has been a great team member and a valuable support providing assistance with our projects and connecting us with much needed resources. He recently moved on to a different local government council. We wish him well in his new career path and thank him for all his guidance. In the last few weeks we have welcomed Donna Edwards as our Catchment Officer. Donna has worked with WaCC in the past so is very familiar with our Catchment projects. We look forward to working with Donna.

Lenore Bracey - President

Contents

1	Our Creek Catchments	4
1.1	Wolston and Centenary Catchments (WaCC) – the Catchment Group	4
1.2	Suburbs within Wolston and Centenary Catchments	5
2	WaCC Administration	6
2.1	Management Team	6
2.2	Funding and Support	6
2.3	Media	7
2.4	Membership	7
3	Partnerships	8
3.1	Challenge Employment	8
4	Community Engagement	9
4.1	Centenary Village, Darra Community Planting	9
4.2	Student Catchment Immersion Program (SCIP)	10
4.3	Pooh Corner Bushland Reserve - Weed BioBlitz	10
4.4	Peaks to Points Festival	11
4.5	World Environment Day	13
4.6	Platypus Habitat Enhancement Working Bee	13
4.7	National Tree Day/s Platypus Habitat Enhancement Project	15
5	Ongoing project sites	16
5.1	Overview of Catchment Sites	16
5.2	Research - Fauna Survey	17
5.3	Wolston Creek Bushland Reserve (WCBR)	17
5.4	Wacol Station Road Park	18
5.5	Wolston Road Park	19
5.6	Spine Street Park	19
5.7	Wacol Bushlands (Wau Rd) and Owen Stanley Place Park – Ric Natrass Creek	20
5.8	Wood Park, Phil Denman Park and the Jindalee Recreation Reserve	20
6	Pooh Corner Environment Centre,	21
6.1	Annual Report	21
7	Accountants' financial statements	22

1 Our Creek Catchments

Our Mission Statement is: “To protect and enhance the natural environment and resources within and around Wolston and Centenary Catchments.”

The Wolston and Centenary Catchments consist of the Wolston Creek Catchment and the Centenary Catchments. The creeks within these two catchment areas feed directly into the Brisbane River. Together, these catchments cover 66 square kilometres. They stretch across three City Council areas: Brisbane, Ipswich and Logan.

The Wolston Creek Catchment covers 44 square kilometres and has three tributaries that feed into Wolston Creek e.g. Sandy Creek, Bullockhead Creek and Ric Nattrass Creek. This catchment also forms part of an important wildlife corridor from the Brisbane River through, Pooh Corner Bushland Reserve, Wacol Bushlands to the Greenbank Military Training Area 11 kilometres to the south and to the suburb of Richlands.

Much of the vegetation found in this catchment area has been classified as Endangered Regional Ecosystems. This classification means that the plant species and the soil types are rare and significant.

The Centenary Catchments have a combined area of 22 square kilometres and consist of two main creeks, Mount Ommaney Creek and Jindalee Creek. This area is highly urbanised, mainly residential but with natural bushland reserves along the Brisbane River.

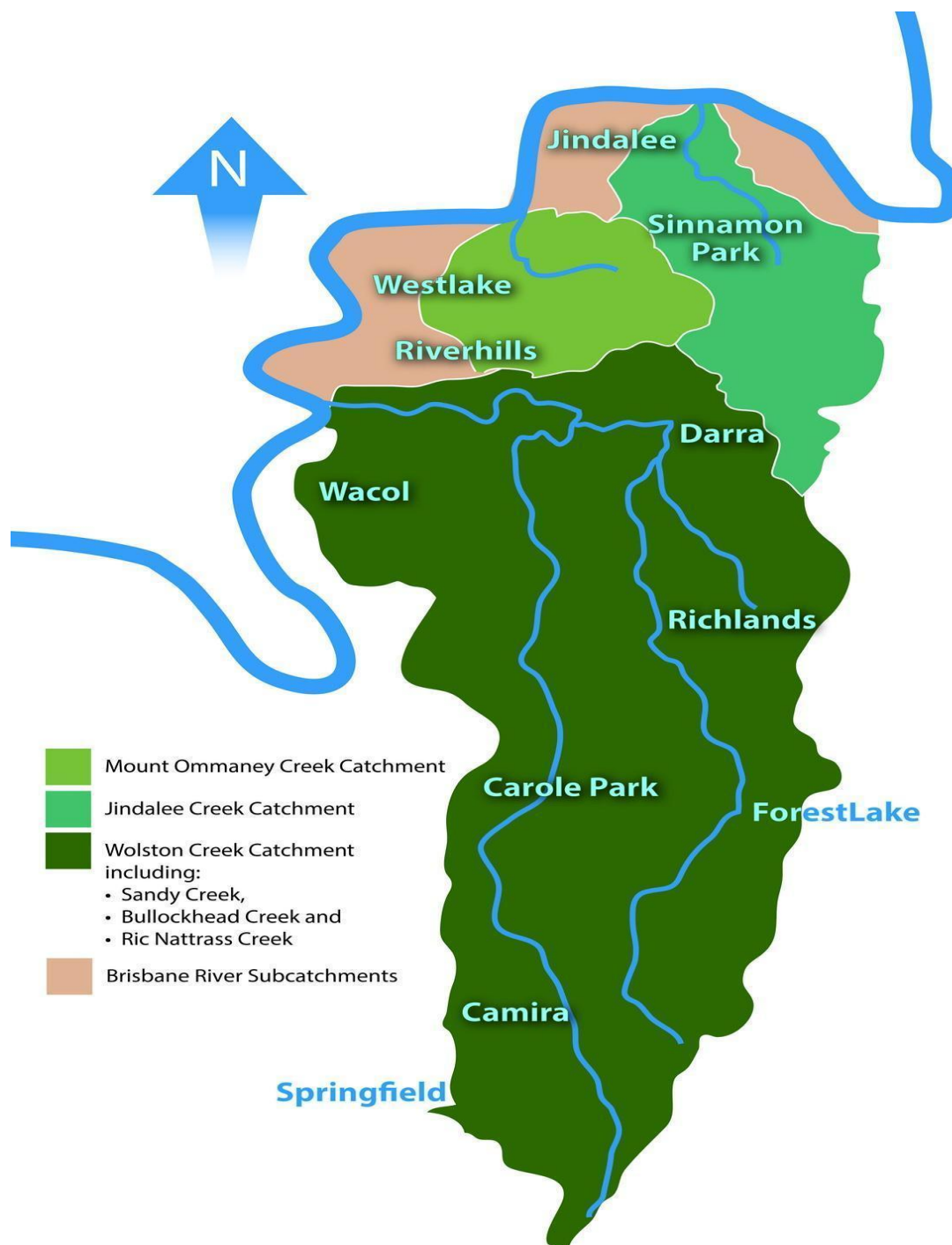
1.1 Wolston and Centenary Catchments (WaCC) – the Catchment Group

The formation of WaCC as a Catchment Group occurred as the result of lobbying over a period of years by some local residents, from the late 1990s. Ed Parker was heavily involved in this lobbying process. WaCC was then formed in 2008 following Brisbane City Council approval as a community-based catchment group and was appointed a Catchment Officer.

The aim was for the group to drive community involvement in protecting and enhancing the natural environments of the Wolston and Centenary Catchments. In 2012 WaCC was formally incorporated by the Office of Fair Trading.

Between 2008 and 2013, a number of organisations and volunteers then became instrumental in the formative days of WaCC, and the Brisbane City Council (BCC) purchased Pooh Corner Bushland Reserve. Some of these are: Friends of Pooh Corner (FoPC), the Centenary Districts Environment Action group (CDEA), Save Our Riverfront Bushland (SORB), and Wolston Creek Bushcare Group (WCBG).

1.2 Suburbs within Wolston and Centenary Catchments



2 WaCC Administration

WaCC as an incorporated not for profit environmental organisation, registered with the Office of Fair Trading is required to hold regular Management Committee Meetings plus Annual General Meetings (AGMs) with election of office bearers. Additionally, WaCC is required to submit an annual Financial Statement to members and the Office of Fair Trading. This is managed by our Treasurer and produced by Liberty Wealth Accountants.

Additionally, WaCC is proud to be part of the BCC Creek Catchment Program. BCC has identified work sites scattered across the WaCC Catchments that are suitable and safe for our volunteers to manage. As an Incorporated Association, combined with being an approved BCC Catchment Group, WaCC is eligible to apply for various sources of grant funding from all levels of government and other organisations.

To successfully apply for grants and to give our volunteers a safety net, it is necessary for WaCC to hold public liability and other insurance. WaCC acknowledges the importance of the Queensland State Government funding of our public liability insurance provided by Queensland Water and Landcare (QWALC). Additionally, WaCC maintains a WorkCover Queensland insurance policy.

2.1 Management Team

The WaCC Management Committee presently consists of six people elected at our recent AGM and they manage and administer WaCC's governance, planning and policies. WaCC is the sole manager of the Pooh Corner Environment Centre (PCEC) operating within a licence from BCC.

Our Management Team consists of the following members:

President: Lenore Bracey	Vice-President: Julie Vejle
Treasurer: Anna Clayton	Secretary/Membership Secretary: Cassandra Ashmore
Committee Member: Ed Parker	Committee Member: Matthew Fry

2.2 Funding and Support

WaCC relies on various sources of funding and is proudly supported by BCC which provides funding to cover basic administrative costs throughout the year. This funding covers items like accounting; rent, PO Box rent, website maintenance, cleaning and stationery costs for the year. These funds keep the administration side of our activities humming along without draining funds from our on-ground vegetation restoration projects.

BCC is in the process of streamlining administrative support funding for WaCC. The aim is to reduce the workload of volunteers who usually spend many hours preparing and submitting

applications in the hope of receiving funds. The new and very welcome process guarantees a more reliable source of funding. WaCC appoints the Treasurer to specifically manage this funding. This arrangement enables us to meet compliance and governance requirements as an associated incorporation.

Additionally, this year WaCC received a donation from HP PPS Australia Pty Ltd which was very welcome. There was no WaCC or Grant funding allocated for the National Tree Day planting event. The President reluctantly but successfully approached the Committee to cover funding the event. The plants were ordered and as a wonderful surprise HP PPS Australia, whose committed employees volunteered for the event, offered to cover the cost of purchasing 700 plants.

2.3 Media

WaCC maintains a website for the organisation wacc.org.au. WaCC's facebook page is regularly updated and on average has around 500 followers. Group emails notify members, friends and volunteers of WaCC about relevant events and environmental news. These group emails are updated annually and monitored for anyone wishing to unsubscribe.

Thanks to Cr Sarah Hutton BCC for placing notification of WaCC events in the BCC Jamboree Ward Greenhart News.

2.4 Membership

Membership with WaCC is established through the payment of a fee each financial year. This is open to individuals, households, and corporations. WaCC's current membership total is 28, consisting of 14 household group members, 1 organisation, and the remaining 13, individuals. Since the last AGM, WaCC has received new membership applications, 7 of which continue into this financial year

The funds assist with some resourcing but are not a major source of income. Having a higher number of members does assist our organisation to apply for grants and usually results in a greater number of volunteers and interest in our activities.

3 Partnerships

3.1 Challenge Employment

In November 2020 Challenge Employment, with Queensland State Government funding, began their trainee program and continued until the trainees graduated on 26th March 2021. The funding provided a paid supervisor to deliver training modules and oversee on-ground works. WaCC also provides access to the PCEC as a place for volunteers to meet and for training sessions.

BCC Creek Catchment Program provided valuable support which resulted in provision of plants, tools, watering and weed removal. Special thanks also go to Save Our Waterways Now (SOWN) community nursery for generously providing large numbers of tube stock plants.

The trainees from this intake, extended their work into Centenary Village and Progress Road sites to cover more of the Bullockhead Creek Corridor. Working onsite every day, they were able to achieve amazing results for one of the most biodiverse green corridors in our catchment. Partnering with Challenge Employment increases volunteer follow-up maintenance work on various ongoing WaCC ecological restoration projects. Such work is a requirement of most funding agreements and is vital to successful project outcomes.

Unfortunately the funding for this Program ended in March this year. Our President and Vice-President attended the Graduation ceremony held at our PCEC. WaCC is proud to have been part of this Program and it was heart-warming to see the volunteers receive their certificates.



4 Community Engagement

4.1 Centenary Village, Darra Community Planting

On the morning of Sunday the 25th of October 2020, approximately 50 very enthusiastic people attended the Centenary Village community planting event. See photo below. A variety of plant species endemic to the local area were planted along the western bank of Ric Natrass Creek in the Owen Stanley Place Park, on Ramu Street. With many of the local residents volunteering on the day, light work was made of planting over 500 trees, shrubs, and waterway grasses, and the spreading of over 20 cubic metres of mulch.

Gecko's Wildlife was also on hand to provide the kids with an opportunity to see native animals including tree frogs, lizards, and owls up close. From a behind the scenes perspective, many thanks to sponsors BCC and local supporters from the Centenary Village community for making the day a great success.



4.2 Student Catchment Immersion Program (SCIP)



In March this year our annual participation in the QUT SCIP Program, focussed on weeding. This work was very valuable as maintenance for the previous planting along Ric Natrass Creek in October 2020 (discussed above). The students worked hard to clear weeds from around the young plants so they will continue to thrive. You can see the huge piles of weeds in the photo pulled out and dug out by the energetic students.

Our President outlined previous rehabilitation efforts at this site and shared knowledge of the fauna and flora that occur along the creek corridors. The students were excited and surprised to hear that Platypus lived in these local Creeks and that this work

will enhance their habitat.

A hearty lunch was provided by BCC and enjoyed by all. WaCC would like to thank Mark Creyton from the QUT SCIP Program and Adam Richardt from BCC's Creek Catchment Program, for their organisation and for working with WaCC to make this event a success.

4.3 Pooh Corner Bushland Reserve - Weed BioBlitz



On 30th May WaCC held a Weed BioBlitz at Pooh Corner Bushland Reserve with the support of BCC and volunteers from one of the Habitat Brisbane Bushcare Groups. They were concerned with some weeds appearing in abundance at the beginning of the tracks near the entrance to the Reserve. Ed Parker provided weed samples (see left image) to help people identify weed species to be removed. Young and old pitched in (see photo below) and BCC removed the pile of weeds in the following days.

Local bushcare groups meet for a few hours once a month, pulling out weeds and having a friendly cuppa.

Their efforts are aimed at restoring natural habitat and protecting biodiversity in Brisbane's bushland, wetlands and waterways. New members are always welcome to join! BCC is available at (07) 3403 8888 or www.brisbane.qld.gov.au for more information.



4.4 Peaks to Points Festival

The Peaks to Points Festival has been running since 2008 and was proudly supported by the BCC. The Festival, held this year from 17 July to 1 August, is a biennial event that provides a forum for community groups and businesses on the south and south west side of the Brisbane River to collaborate and engage with the community. Various events and activities focussed on important environmental and sustainability issues. WaCC had a stall at the Peaks to Points family day on the Oxley Common and liaised with other stallholders and visitors. Thank you to Ed, David, Frank and Cassy for your assistance.

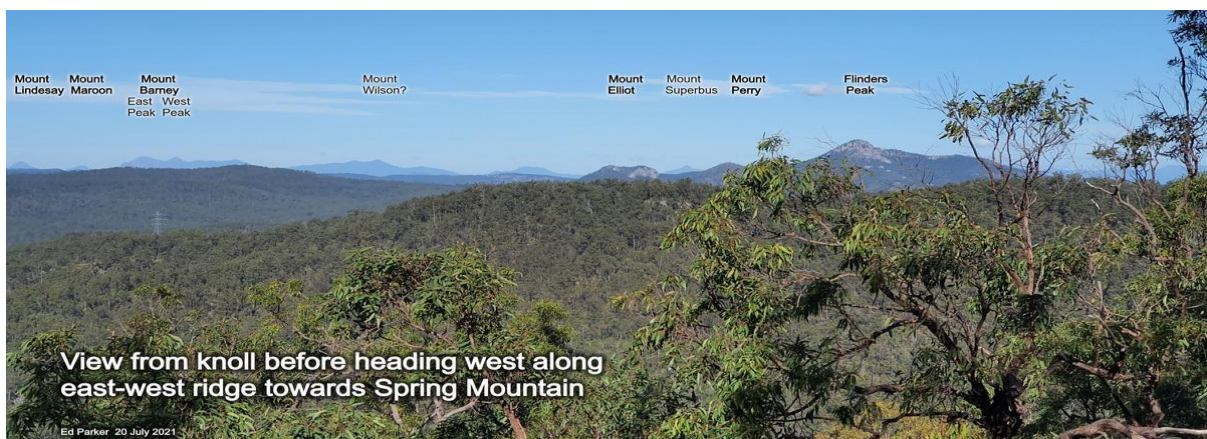


Two nature walks were conducted by WaCC members as part of Peaks to Points activities. The first (photo below) was through Wolston Creek Bushland Reserve on the 17th July. Julie

Vejle guided a walk with 14 enthusiastic people despite the chilly morning. Julie has managed the bushland for many years and during their walk revealed the abundance of natural vegetation and bush tucker plants. Having to take a photo with masks on, as shown in the photo below, reminds us of how things were so different during the pandemic.



The second walk, photos below, was held on 20th July. Ed Parker guided a group of walkers for a 10km return hike along the Spring Mountain Ridgetop. He highlighted the stunning views from the ridge vantage points and 360 degree outlook from the Spring Mountain peak.



4.5 World Environment Day

The World Environment Day event was held on Sunday 6th June, this year at Pooh Corner Bushland Reserve and at the PCEC. BCC's Jamboree Ward Councillor, Sarah Hutton hosted the event in conjunction with WaCC and Centenary and District Environment Action.



Having the Councillor's support and resources, made the day hugely successful with around 10 stalls showing various sustainable solutions for use in everyday life. Guided bush and bird watching walks, various children's activities organised by Centenary Districts Environmental Action, and a wildlife show were all enjoyed by the community. Approximately 100 people came along to this event.

The Breezeway section of the PCEC, (shown left), was the perfect spot to show the native animals to everyone, and for children to do some rock painting, which was a popular activity!

4.6 Platypus Habitat Enhancement Working Bee

On Sunday morning 27th June in Wau Road, Wacol Bushlands, Centenary Village, Darra, we held a working bee to prepare the 6.35 ha site for the National Tree Day planting event.

BCC had organised whipper snipping of weeds weeks before this event. You see in the photo below that the weeds were then left lying on the ground to remain as mulch in preparation for the upcoming National Tree Day planting event. Our BCC Catchment Officer, Adam Richardt, then organised some mulch to be delivered onsite as part of the preparation. Fourteen local residents cleared the remaining weeds from around a number of trees and shrubs and generally prepared the site. Biodiversity Services Unit from Oxley Creek Catchment Association (OCCA) attended and identified and provided educational sessions to show volunteers how to manage the weeds that occur locally and onsite.



The photo above shows the site prepared for planting with existing trees planted in 2016. The photo below shows the same site just after that original planting. You will notice the absence of any of the trees in the foreground compared to the above photo taken this year.



4.7 National Tree Day(s) Platypus Habitat Enhancement Project

Our Planet Ark National Tree day event which was due to be held on 1st August this year was delayed by the sudden announcement of a lockdown in Brisbane and other areas. The



aim of the event was to extend the 2016 planting site and plant in between the present trees along the the banks of the Ric Natrass Creek situated in the Wacol Bushlands at Wau Road, Darra in Centenary Village.

As Coordinator of the event, our President had already organised the purchase of 700 plants which had been delivered to Matthew and Kylie Fry's nearby home the day before the lockdown was announced. We were all set to go expecting approximately 60 participants to help plant and spread mulch already delivered thanks to BCC. We then

had to cancel the event and spring into action notifying all those who had registered to volunteer via the Planet Ark Website. Little did we know that changing dates and reorganising the event would continue for about six weeks. The event was divided into two; the first was delayed until the 15th August when all the plants were planted and some mulch spread around them. The second event was delayed until the 11th September. Our BCC Catchment Officer consulted with WaCC to rearrange work for a second planting which was to be attended by corporate volunteers. This work would involve clearing weeds from the entrance of the Bushlands, digging holes and planting 130 newly sourced native plants from SOWN nursery.

Thank you to Matthew and Kylie for keeping the plants alive and well for two weeks and transporting them to the site on the 15th August. Thank you to all the volunteers who came along on the new dates.

5 Ongoing project sites

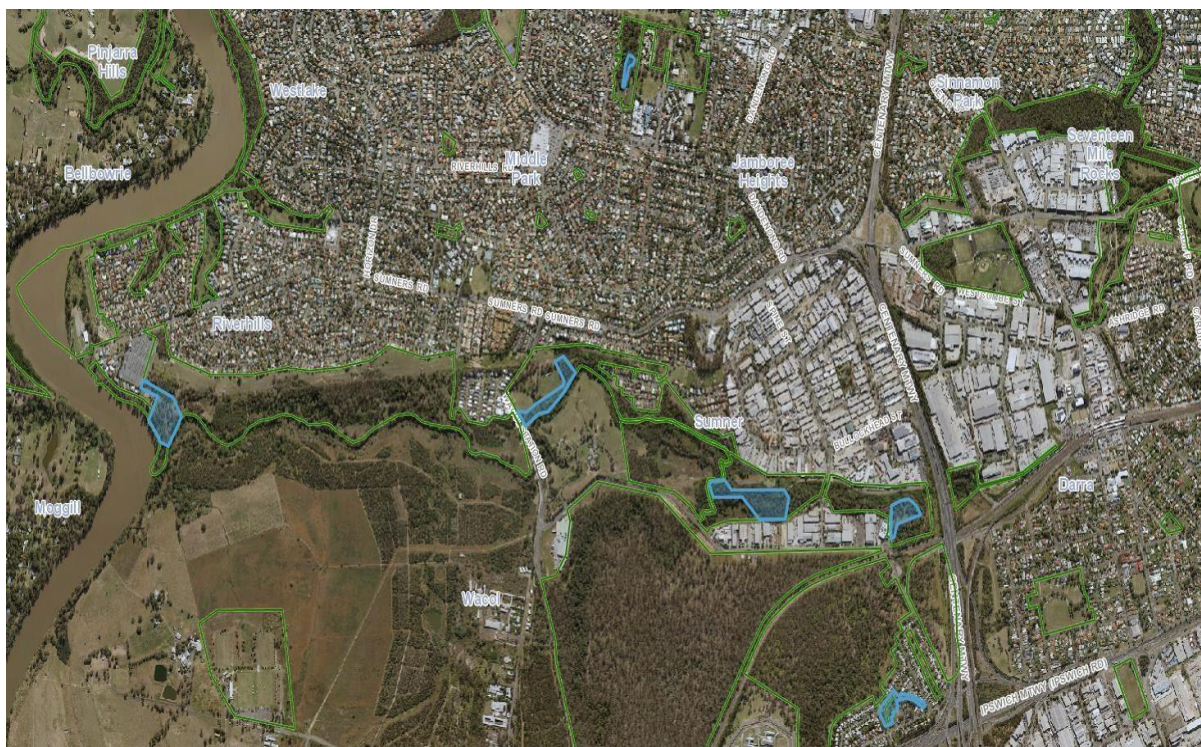
5.1 Overview of Catchment Sites

Although surrounded by various types of development, the Wolston Creek corridor contains high environmental values, forming part of a major wildlife corridor from the Brisbane River through Pooh Corner Bushland Reserve, into the Wacol Bushlands in Centenary Village and on to the Flinders Ranges. The Centenary Catchments consist of two smaller creeks: Mt Ommaney Creek with Wood Park and Beanland Street Park as WaCC work sites and Jindalee Creek where the Jindalee Recreation Reserve backs on to the Creek.

Past and current works were funded by grants from various government sources and were proudly supported by the BCC's Creek Catchment Program. In the past twelve months, WaCC has concentrated on project sites along waterways in the Wolston Creek Catchment.

WaCC teamed up with Challenge Employment and Training and won a bid for Skilling Queenslanders for Work (SQFW) funding from the State Government. This program trained young people with the aim of attaining a Certificate I in Conservation and Land Management, providing them with skills in a practical setting for bush rehabilitation and a clear employment pathway for successful trainees.

The BCC Creek Catchment Officer and WaCC collaborated with Challenge choosing seven sites to work on, highlighted in blue, below.



5.2 Research - Fauna Survey

While there is anecdotal evidence of several key native species within the Bullockhead and Ric Natrass Creek, the scientific proof of their presence has either been sporadic or is dated. To this end, WaCC successfully acquired funding to conduct a fauna survey of the area by virtue of the Federal Government's Communities Environment Program.

The grant was managed by our former Treasurer, Michael Kerridge, and the survey was commissioned for the area along Bullockhead Creek in 2020. This survey established an important baseline data set and information to inform our planning and choice of vegetation. Projects can be prioritised to best protect and enhance habitat for a variety of native species, including birds, grey-headed flying fox (federally listed as vulnerable), reptiles, and Platypus.

5.3 Wolston Creek Bushland Reserve (WCBR)

WCBR is the largest management site within the WaCC's area, covering about 47 ha in Riverhills. The eastern end (38ha nearest Wacol Station Road) of the Wolston Creek Bushland Reserve is managed by WaCC within the Creek Catchment Program; and the western end (9ha nearest the river) is cared for by the Wolston Creek Bushcare Group (WCBG) through the BCC Habitat Brisbane Program.

In the 20th century, much of the original vegetation was removed. It was cleared for farming by early settlers, later used as prison farmland and then replanted when ultimately placed under BCC management in 2003. Fortunately, some remnant vegetation still remains. The reserve is now a combination of planted areas plus endemic riparian and dry sclerophyll remnant bushland. It has 7 flora species rare to Brisbane, wildlife galore and alongside the natural area has a dog park, with grassed walking tracks from end to end.

The WCBR is committed to tending the Bushcare site in addition to monitoring the entire reserve. They are working to restore valuable remnant bushland near Wolston Creek and the Brisbane River. WCBG holds informal monthly working bees followed by a cuppa. It is open to the public and free to join. New members are always welcome. The group meets at WCBR in Riverhills West - near the shipping container (tool shed) midway between Riverpoint Blvd and Sumners Rd entrances (west of 452 Sumners Road). Starting time is 7.30am and finishes about 10am every fourth Sunday of each month, weather permitting. To find a bushcare group near you, phone BCC on 3403 8888.

However, the sheer size of the Bushland Reserve means that ongoing funding and continuing volunteer workers are a necessity. Additionally, ongoing flora and fauna tracking and updating of lists is essential. WCBG has several dedicated people managing weeds and reducing the seed-bank. This work allows native vegetation a chance to regenerate, (see photo below) and improve the habitat for all living things.



5.4 Wacol Station Road Park

Wacol Station Rd Park is an area of about 10 ha, situated along Bullockhead Creek in Sumner. Although surrounded by industrial development, it contains high environmental values. Trainees from the Challenge training program continued extensive weeding works on the site in 2020. They also planted 367 plants including 80 of appropriate mixed shrubs and trees, to help manage erosion risks.

Ongoing projects on this site serve to consolidate previous work and investment, towards the ultimate goal of ecological restoration. Work is funded by the BCC Community Conservation Assistance Program and supported by the BCC Creek Catchment Program.



5.5 Wolston Road Park

Wolston Road Park consists of an area of about 15 ha, and is also situated along the Bullockhead Creek, in Sumner. The site has been maintained by Skilling Queenslanders for Work trainees, WaCC volunteers, and contractors through the Lord Mayor's Environment Grant (ENV18-19330) and proudly supported by the BCC Creek Catchment Program. The trainees from Challenge contributed to large scale weed removal and planted over 3500 plants supplied by BCC and SOWN.

The more than 3000 plants planted 2018-19 by WaCC and Multicultural development Australia trainees were in need of maintenance and so Oxley Creek Catchment Business Unit was contracted to protect these plants from encroaching weeds. Challenge Employment trainees also assisted to continue weed maintenance during 2020.



5.6 Spine Street Park

Spine Street Park covers an area of 8-9 ha, situated in Sumner Park opposite Wolston Rd Park. The site runs parallel to Wolston Road but is separated by a line of industrial companies. Although surrounded by development, the park has maintained its high environmental values. Considerable rehabilitation and maintenance has been carried out in the riparian area of the creek (Bullockhead Creek) over the past three years by WaCC partnerships with Multicultural Diversity Australia and Challenge Employment Trainees.

Projects were funded by Queensland Department of Environment Science Community Sustainability Action Grants, BCC Community Conservation Assistance Program (CCA Grants) and BCC Environmental Sustainability Grants. They were supported by the BCC Creek Catchment Program and Environmental Trainee volunteers.

The focus was on removing numerous weed species, and planting more than 2000 native plants. The last planting and weeding event was carried out through the Skilling Queenslanders for Work Program and WaCC volunteers in late 2020. One part of the rehabilitation of the wetland area is shown below.



5.7 Wacol Bushlands (Wau Rd) and Owen Stanley Place Park – Ric Natrass Creek

Further upstream in the Wolston Catchment is the Wacol Bushlands and the residential area of Centenary Village. These sites have been managed through working bees and events as discussed in sections 4.6 and 4.7, aiming to enhance platypus habitat.

5.8 Wood Park, Phil Denman Park and the Jindalee Recreation Reserve

Wood Park and Phil Denman Parks are in the Mt Ommaney Creek corridor and the Jindalee Reserve, the Jindalee Creek corridor. These three sites have previously been planted by WaCC, supported by the Jamboree Residents Association and local scouts and girl guide volunteers, and recently received some maintenance by Challenge Employment Trainees.

6 Pooh Corner Environment Centre

6.1 Annual Report



COVID-safe seating arrangements

WaCC has been operating the Pooh Corner Environment Centre (PCEC) since 2015 under a licence with the owners, BCC. WaCC uses the facility in conjunction with its PCEC partner groups, Centenary and District Environment Action (CDEA) and Friends of Pooh Corner (FoPC).

WaCC has a PCEC subcommittee whose members are Ed Parker (PCEC Coordinator), Shealagh Walker and Julie Vejle. The subcommittee aims to meet quarterly and reports to the WaCC management committee on operational and maintenance matters.

During the past twelve months, the COVID-19 pandemic has curtailed public usage of the facility. The PCEC operates under BCC's COVID-SAFE Work Procedures for volunteer activities. In addition to providing a base for WaCC's activities, the PCEC facility has been made available for use by other organisations and local community groups under hire arrangements.

Thanks to the Stronger Communities Programme Round 6 we were able to have air conditioning installed to the meeting room within the centre. Thank you to Milton Dick MD for his assistance to WaCC and making this funding possible. Air conditioning will not only improve amenity for users but will allow windows to be closed to dampen industrial noise from nearby industry.

7 Accountants' financial statements



Income and Expenditure Statement

Wolston and Centenary Catchments Inc
For the year ended 30 June 2021

	2021	2020
Income		
Donations	4,000.00	35.00
Grant Income	13,139.13	33,083.73
Interest Received	19.39	290.58
Membership	185.00	210.00
Other Income	2,091.00	1,300.00
Rental Income	200.00	-
Total Income	19,634.52	34,919.31
Total Income	19,634.52	34,919.31
Expenditure		
Accountancy	1,723.28	1,754.60
Administration	6,988.00	3,595.00
Bank Fees & Charges	-	9.95
Catering Expenses	-	165.23
Cleaning	148.56	137.81
Depreciation	137.13	195.90
Entertainment	43.00	-
Equipment Fitting	-	109.51
General Expenses	9.98	-
Insurance	200.00	200.00
Motor Vehicles	-	160.00
Office Expenses	163.45	217.40
Plants & Regeneration	27,964.64	32,665.16
Postage	136.00	134.00
Registrations, Licences & Permits	57.60	232.85
Staff Amenities	-	78.02
Subscriptions	120.00	67.74
Telephone & Internet	459.97	258.00
Travel and Accommodation	150.00	-
Total Expenditure	38,301.61	39,981.17
Current Year Surplus / (Deficit)	(18,667.09)	(5,061.86)



Detailed Statement of Financial Position

Wolston and Centenary Catchments Inc As at 30 June 2021

	NOTES	30 JUN 2021	30 JUN 2020
Assets			
Current Assets			
Cash and Cash Equivalents			
Community Access Account		11,402.60	3,467.59
WACC Restricted Fund Account		8,767.74	35,232.71
Total Cash and Cash Equivalents		20,170.34	38,700.30
Total Current Assets		20,170.34	38,700.30
Non-Current Assets			
Plant and Equipment			
Plant & Equipment		1,907.02	1,907.02
Less Accumulated Depreciation on Plant & Equipment		(1,587.05)	(1,449.92)
Total Plant and Equipment		319.97	457.10
Total Non-Current Assets		319.97	457.10
Total Assets		20,490.31	39,157.40
Net Assets		20,490.31	39,157.40
Member's Funds			
Current Year Earnings		(18,667.09)	(5,061.86)
Retained Earnings		39,157.40	44,219.26
Total Member's Funds		20,490.31	39,157.40

Note: the complete Financial Report is available on request from the Secretary or Treasurer of WaCC.