

Wolston and Centenary Catchments Inc

2019 – 2020 Review



"Our Catchments, Our Community, Our Commitment"

Wolston and Centenary Catchments Inc. ABN: 71 255 469 038 100 Wolston Road Wacol,
Queensland 4076

Email: info@wacc.org.au Website: www.wacc.org.au

Cover image: Eastern Grey Kangaroo at Wolston Creek Bushland Reserve. Photo by WaCC
member Ed Parker.

President's address

Acknowledgement of Country: I pay my respects to the Yuggera and Turrbul peoples of the land on which we meet and respectfully acknowledge their elders, past, present and emerging.

I would like to thank everyone for joining us at Wolston and Centenary Catchments' (WaCC) Annual General Meeting. Thank you for taking the time out of your busy schedule to show your support. It has been a difficult year for everyone with the pandemic causing a lot of disruptions to our operations in WaCC and of course our personal lives. Even so we have managed to continue with committee meetings and sustain our projects through support from our state and local government grants.

I would like to thank the management committee for their efforts over the past year. You are each essential to the success of our group and I would like to thank you all for your hard work and commitment to WaCC's objectives and ideals. Our former Secretary Rory Dowling helped us when we needed support and we are grateful to him. Our Vice-President Julie Vejle and PCEC Co-ordinator Ed Parker have continued to play a vital role in WaCCs operations. Our Treasurer, Michael Kerridge has been a very welcome addition to the team and taken the role on professionally and we are grateful for his provision of a smooth transition from his role.

Many more volunteers make up the WaCC community and we have been fortunate to have their assistance. I would like to thank you all for helping WaCC stay connected with the community, especially in these difficult times. A big thank you also goes out to our Brisbane City Council Creek Catchment Officer, Adam Richardt, for helping us with our projects and connecting us with much needed funding and support.

Unfortunately COVID-19 has led to a reduction in our ability to host community events this year but I am very grateful to the committee for persisting through these hard times and keeping up with communication. When we have had community events, everyone has showed up with great leadership and respect for COVID safety measures. Although our events were light on the ground this year, we have still managed to stay connected and I am proud of all that we have achieved. As you know I will be moving on from the position but I am very proud to have been a part of this ground and am grateful for all I have learnt from you and will take these lessons with me to my next roles. I will always be an email or a phone call away so don't hesitate to keep in contact. I know I am leaving WaCC in excellent hands and know that you are all ready to move forward with WaCCs work for the year ahead. I am encouraged by the planting event happening tomorrow and the great work that Challenge Employment will do throughout our catchments through the Skilling Queenslanders for Work Program.

All of our members and volunteers throughout the community have an important role to play and your support is extremely valuable in ensuring WaCCs continued success. Good luck to all for the year ahead!

Katrin Lowe - President

Contents

1	Our catchments	3
2	Map of Wolston and Centenary Catchments	4
2.1	History	5
2.2	Timeline of WaCC	5
2.3	Mission statement	6
2.4	Membership	6
2.5	The management committee	6
3	Events and Awards	7
3.1	Lord Mayor's Australia Day Green Heart Award 2019	7
3.2	Community events	8
3.3	Centenary Village Waterway clean-up and community planting	9
3.4	Student Catchment Immersion Program (SCIP)	10
4	Our projects (in alphabetic order)	11
4.1	Administration grants	11
4.2	Fauna Survey: Bullockhead Creek (CEP77928)	12
4.3	Flora Database Project	13
4.4	"Friends of BushWaCCers", Skilling Queenslanders for Work, 2018-2020	14
4.5	Spine Street Park 2018 – 2020	16
4.6	Wacol Station Road Park, Ongoing Project.	17
4.7	Wolston-Bullockhead Creek Corridor Projects	18
4.8	Wolston Creek Bushland Reserve	20
4.9	Wolston Road Park, Ongoing Project	21
4.10	Wood Park Ongoing Restoration Project	23
5	Our facilities - Pooh Corner Environment Centre, Coordinator's Report	24
6	Accountants financial statements	26

1 Our catchments

The Wolston and Centenary catchments consist of Wolston Creek and its sub-catchments and various other creeks and their catchments in the Centenary and surrounding suburbs, which feed directly into the Brisbane River. Together, these catchments are 66 square kilometres in size and are located within Brisbane, Ipswich and Logan City Council areas.

The Wolston Creek Catchment area is 44 square kilometres. Wolston Creek forms the downstream part of the catchment, which flows, into the Brisbane River. Feeding into Wolston Creek at Sumner Park are its three tributaries, Ric Natrass Creek, Bullockhead Creek and Sandy Creek, which have their respective sources in Richlands and the Greenbank Military Training Area 11 kilometres to the south. Much of the vegetation found in this area has been classified as Endangered Regional Ecosystems. This classification means that the plant species and the soil type in the bushland reserves are rare and significant.

The Centenary Catchments have a combined area of 22 square kilometres and consists of two main creeks, Mount Ommaney Creek and Jindalee Creek. There are several other minor, unnamed creeks and sub-catchments, which flow separately into the Brisbane River. This area is highly urbanised, mainly residential but with natural bushland reserves along the Brisbane River, creeks and other locations.

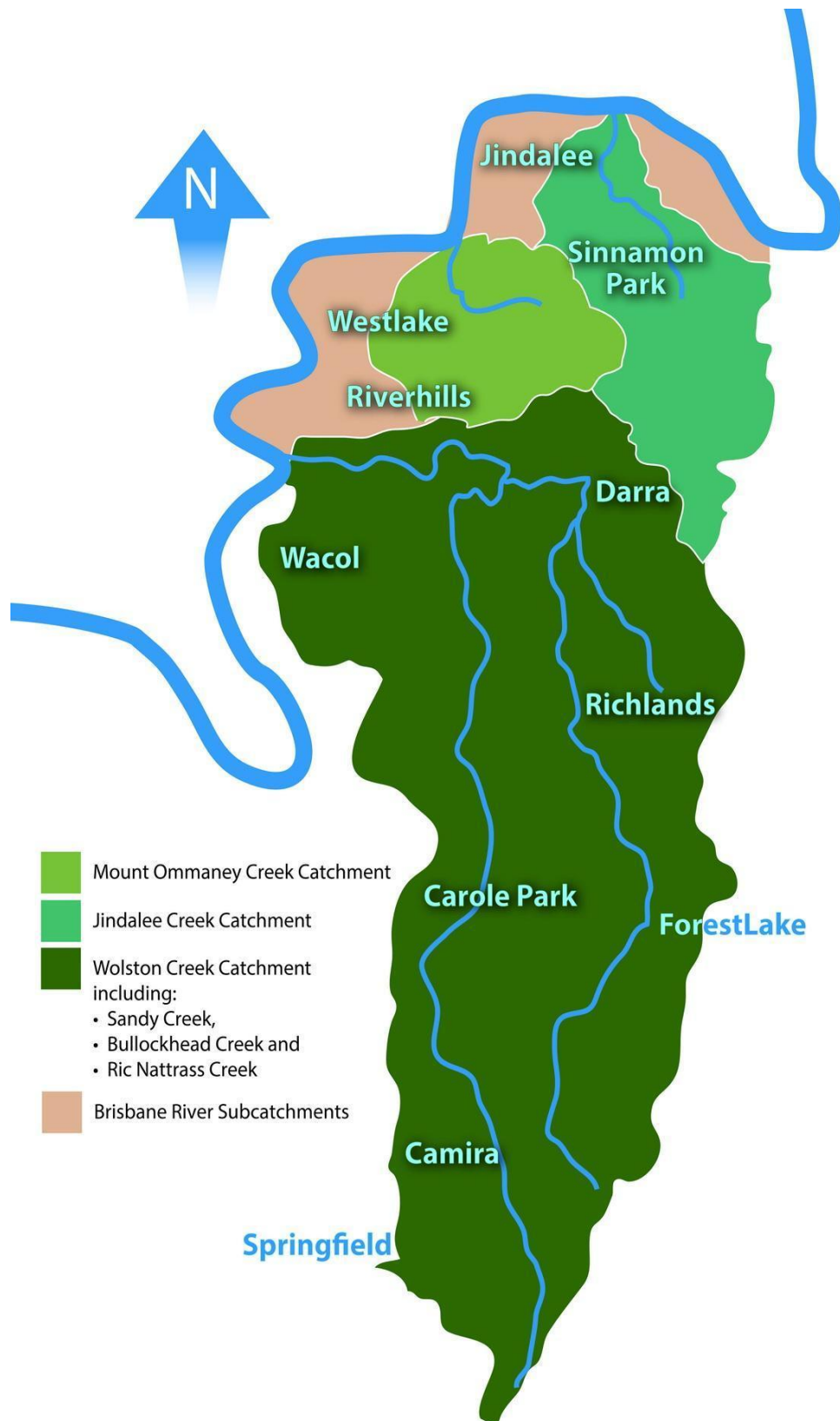
The catchments include all or part of the following suburbs:

Jindalee, Mount Ommaney, Westlake, Seventeen Mile Rocks, Jamboree Heights, Riverhills, Sinnamon Park, Middle Park, Sumner, Wacol, Ellen Grove, Richlands, Gales, Carole Park, Darra, Forest Lake, Camira and Springfield.

The significant natural assets in Wolston and Centenary catchments include:

Wolston Creek Bushland Reserve, Pullen Reach Bushland Reserve, Rocks Riverside Park, Mount Ommaney Bushland Reserve, Edenbrooke Park, Pooh Corner Bushland Reserve and Wacol Bushland Reserve.

2 Map of Wolston and Centenary Catchments

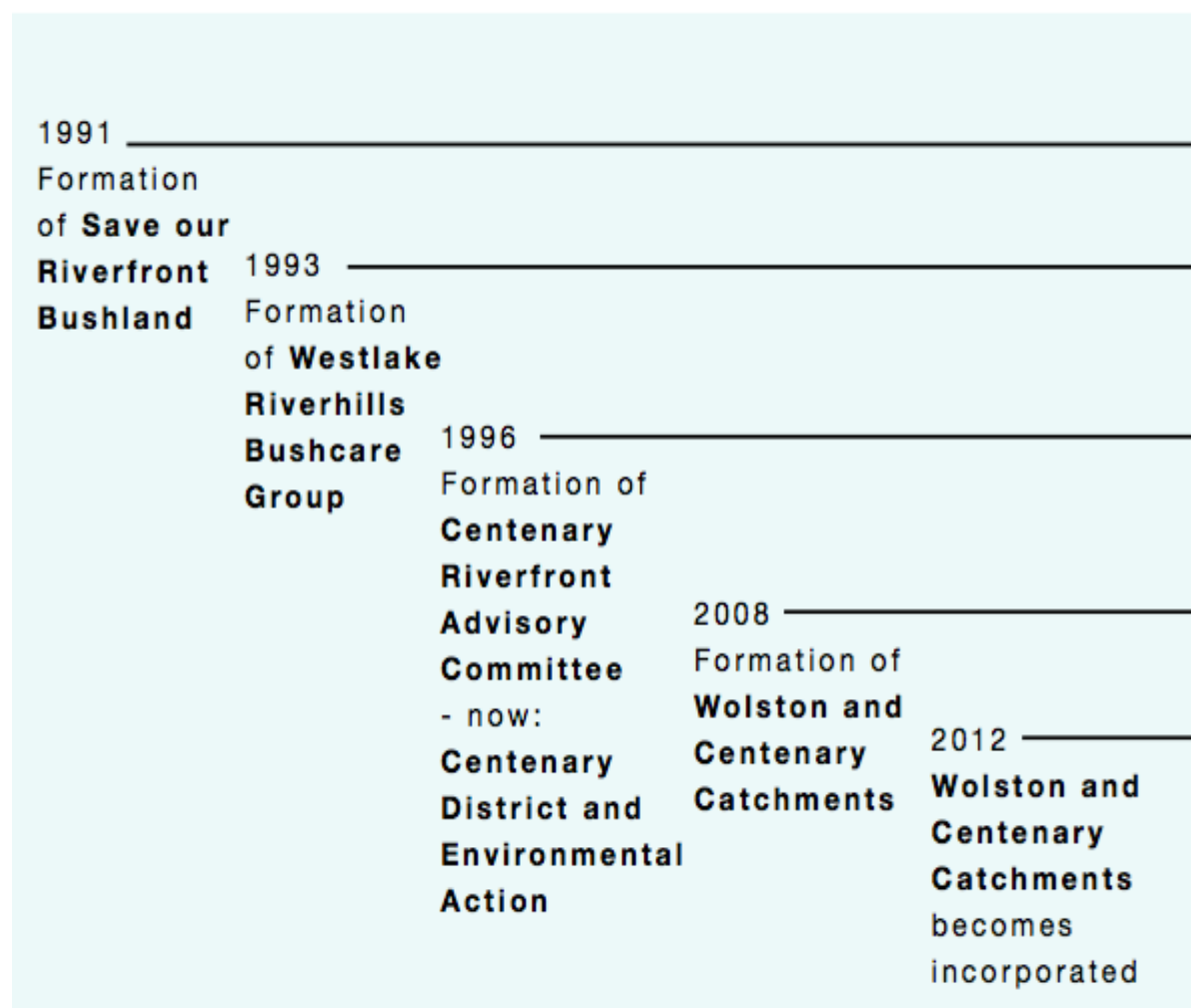


2.1 History

WaCC was formed in 2008 as the community-based catchment group to oversee and drive the community's involvement in protecting and enhancing the environment in the area covered by the Wolston and Centenary Catchments. In 2012 the group was formally incorporated and a new management team appointed.

WaCC acknowledges a number of organisations and volunteers who were instrumental in getting WaCC started. Some of these are: Brisbane City Council, Centenary Districts Environment Action Group, Friends of Pooh Corner, Save Our Riverfront Bushland, and Wolston Creek Bushcare Group.

2.2 Timeline of WaCC



2.3 Mission statement

To protect and enhance the natural environment and resources within and around Wolston and Centenary Catchments.

2.4 Membership

Membership for WaCC is defined by an annual financial payment and is open to individuals, households and corporations. The present membership consists of 16 persons, (female and male). The number of eligible voting members for the AGM is 13 persons. There have been ongoing discussions held at various Management Committee Meetings to review the nature and the definition of 'Membership'. The membership numbers have remained stable over the past 5 years being in the low thirties each year.

2.5 The management committee

The WaCC Management Committee consists of five members who oversee the management of all WaCC administration and policies and a sub-committee that manages the ongoing facility maintenance and fittings of the Pooh Corner Environment Centre.

WaCC said farewell and thank you to Michael as Treasurer this year as he was no longer able to commit time to the role. We then welcomed Anna into the Treasurer Role. WaCC also bids goodbye and many thanks to President Katrin who is succeeded by Lenore, an experienced returning member of the Management Committee. Finally, Rory stepped down from his role as Secretary to be followed by Cassandra, who enters the role as a non-member Secretary, nonetheless enthusiastic about the role.

The present Management Committee is as follows:

President: Lenore Bracey

Vice-President: Julie Vejle

Secretary: Cassandra Ashmore

Treasurer: Anna Clayton

Committee Member: Ed Parker

Administrative Assistant: Sandra Varghese

The PCEC sub-committee is as follows:

PCEC Coordinator: Ed Parker

Sub-Committee Members: Julie Vejle and Shealagh Walker

3 Events and Awards

3.1 Lord Mayor's Australia Day Green Heart Award 2019



WaCC is very proud to have been the 2019 winner of the Lord Mayor's Australia Day Green Heart Award. This is to recognise WaCC's ongoing dedication to the preservation of Brisbane's natural environment. A big congratulations to everyone at WaCC that made this award possible. We could not do all that we do without all of the amazing WaCC members and volunteers. Thank you to all WaCC members and volunteers and to Brisbane City Council for the recognition.



3.2 Community events

The restrictions of COVID-19 has impacted our ability to host events this year but WaCC was involved in a number of events throughout 2019 engaging with the community and developing partnerships with local groups. WaCC held three events: Spring Mountain Ridgetop Walk (photo below), Wolston Creek Bushland Reserve Walk, and Wood Park Tree planting (also **National Tree Day**). We also held a **Mid-Year Celebration** in conjunction with **World Environment Day** (June 2019) and co-hosted with Centenary and District Environment Action (CDEA). Guided bush walks, bird walks children's craft activities, and wildlife shows were enjoyed by the community with large numbers (50+) turning out for each of these two events.



The local community enjoying the Geckoes Wildlife show at our Mid - Year Celebration 2019.

3.3 Centenary Village Waterway clean-up and community planting

On the morning of Sunday the 25th of October, approximately 50 very enthusiastic people attended the Centenary Village Waterway clean-up and community planting event. A variety of plant species endemic to the local area were planted along the western bank of Ric Natrass Creek between Wau Road and Kokoda Street. With many of the local residents lending a hand on the day, light work was made in the planting of over 500 trees, shrubs, and waterway grasses, and the spreading of over 20 cubic metres of mulch.

Not to be outdone by all the planting, Gecko's Wildlife were also on hand to present a wildlife show, which provided the kids not only with great insight into the fauna of the area, but also gave them an opportunity to see animals including tree frogs, lizards, and owls up close. From a behind the scenes perspective, many thanks to sponsors Brisbane City Council and local supporters from the Centenary Village community for making the day a great success.



3.4 Student Catchment Immersion Program (SCIP)

WaCC has a long-standing relationship with the Queensland University of Technology SCIP program. QUT students gain valuable experience by working on WaCC project sites, getting their hands dirty pulling weeds, planting, spreading mulch and removing rubbish or litter. Participants are not only from environmental courses. They include various areas of study, such as engineering and more. Unfortunately, due to COVID restrictions the 2020 session was pushed back to 2021.

In 2019, they worked at Wolston Creek Bushland Reserve, where Wolston Creek joins the Brisbane River. They did a brief tour to see the main features and views and to hear the basic history of the site. Features include seven floral species, which are rare in Brisbane, due mostly to land clearing and housing development. Other features are the Open Grassy Blue gum restoration area, numerous plantings by Brisbane City Council and their Two Million Trees Project, the old farmhouse site and dams, which were all dry at that point. After collecting tools, they settled in to remove some patches of mostly Corky passion vine and Coral berry. Drought conditions saw the site bone dry and browned off. Flora and fauna were struggling to survive. The Kangaroos, Wallabies and other wildlife, as always, seemed very curious yet wary of our new visitors.

A hearty lunch is always provided by Council and enjoyed by all. Students are encouraged to become volunteers in their local area. WaCC would like to thank Mark Creyton from the QUT SCIP Program and Adam Richardt from Brisbane City Council Creek Catchment Program for helping to organise these events.



4 Our projects (in alphabetic order)

4.1 Administration grants

Administration grants are an important part of maintaining WaCC. It enables us to meet our compliance requirements as an associated incorporation (such as financial reporting, Office of Fair-Trading registration, correspondence domain maintenance) without taking away from our environmental projects.

Having an administration grant means that fees like accounting, rent, PO box, website maintenance and cleaning and stationery costs are provided for the year, which is a great relief to WaCC and the Management Committee. Unfortunately, it is not the most exciting of grants to write about, however, the administrative costs of running WaCC are a necessary burden and we are so grateful to Brisbane City Council for their support in this area and hope to see it continue into the future. Many committee members have generously given time to run these grant in the past as they are an integral part of running WaCC.

4.2 Fauna Survey: Bullockhead Creek (CEP77928)

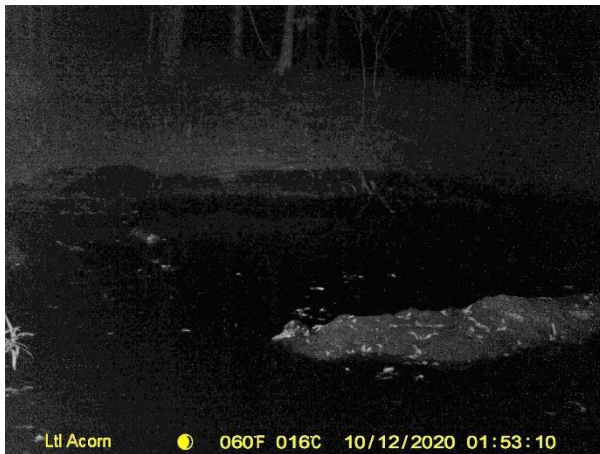
Over the past few years, a lot of community and Council effort has gone into rehabilitating the downstream section of Bullockhead Creek, mainly within Council parks at the northern end of the waterway. Not much community action has occurred south of the Ipswich Motorway, so WaCC wants to collect information to better guide where its future efforts should be directed.

While there is anecdotal evidence of several key native species within the corridor (e.g. platypus and koalas), the scientific proof of their presence has either been sporadic or is dated. To this end, WaCC successfully acquired funding to conduct a fauna survey of the area by virtue of the Federal Government's Communities Environment Program.

The survey has been completed and below are some key highlights from the report:

- Conditions have been dry and tough for fauna so we are missing some species we'd expect to find in the survey area (e.g. frogs).
- We didn't find any koalas or their scat – this will be of interest to the group at UQ who are beginning to investigate the feasibility of releasing koalas in the area.
- eDNA indicates rakali is widespread.
- We have added some bat species to the records for the area (likely because no one has surveyed for them in the area).
- We observed the federally listed (Vulnerable) grey-headed flying fox (but are not surprised by this find).
- We have one photo (below) of a suspected platypus taken by the north western most camera (pool downstream of culverts just after where Bullock Head confluences with Sandy Creek. Rakali eDNA in this pool was equivocal, suggesting that the creature is not a rakali. The image is poor and while some ecologists instantly recognise platypus (without being given any context), others take a more conservative view and are unable to comment on species.

Project Manager: Michael Kerridge



4.3 Flora Database Project

This project began during the COVID lockdown as a partnership between local plant scientist and field botanist, Dr Andrew Pengelly, Wolston Creek Bushcare Group and WaCC.

The main aim is to amalgamate the three existing flora surveys conducted by three different botanists over the years at Wolston Creek Bushland Reserve. There have been name changes to some species on the list. These were noted but not recorded as "new". It is likely that a few species that were not sited this time round may be the result of misidentification or recorded as different species by different surveyors. This could be true for sedges (*Cyperus* spp.), many of which are quite similar in appearance.

After amalgamating prior surveys, Andrew, assisted on occasions by Dr Wang from the Queensland Herbarium, conducted field trips to confirm and verify existing species. They have verified the majority – but not all – of the existing species, while adding some 24 unrecorded species to the survey list. Of these 11 are native, the remainder being exotic weeds, some of which are potentially invasive, notably *Aristolochia elegans*, *Ageratina riparia*, *Cuscuta campestris* and the garden escapee *Murraya paniculata*.

During the field surveys several herbarium specimens were collected, a few of which have been deposited at the Queensland Herbarium, the others being stored at Andrew's residence. Numerous plants have been photographed. It is likely that the project will eventually be expanded beyond the Wolston Creek Bushland Reserve and into the Upper Wolston Creek Catchment. The survey will be completed by March 2021, allowing for a full year's observations.



4.4 “Friends of BushWaCCers”, Skilling Queenslanders for Work, 2018-2020

In recent years, WaCC had partnered with Multicultural Diversity Australia (MDA Ltd), to deliver on ground training to trainees from culturally and linguistically diverse (CALD) backgrounds. Trainees undertook a Certificate 1 in Conservation and Land Management as part of the Skilling Queenslanders for Work (SQW) program from the Queensland Government. Trainees carried out weeding and planting throughout Wolston Creek Bushland Reserve, Wolston Road Park, Wacol Station Road Park, Spine Street Park, Wacol Bushland, and Wood Park.

The next rounds of work began in November 2020 with Challenge Employment at the helm and will run throughout 2021. The SQW funding provides a paid supervisor to deliver training modules and oversee on-ground works. WaCC also provides volunteers, and access to the Pooh Corner Environment Centre (PCEC) as a place to meet and for theoretical training.

BCC Creek Catchment Program provides valuable support such as on ground organisation, plants, tools, watering and weed removal. Special thanks also go to Save Our Waterways Now (SOWN) who have generously provided large numbers of tube stock plants that are lovingly planted and cared for by our SQW trainees.

With the 2020 intake, the work will extend to Darra Centenary Village and Progress Road sites to cover more of the Wolston – Bullockhead Creek Corridor. With many people working every day, they are able to achieve amazing results for one of the most important green corridors in our catchment. In 2019, they planted over 6000 plants. Flow on effects of these

collaborations is that it facilitates volunteer follow-up maintenance work on various ongoing WaCC ecological restoration projects. Such work is a requirement of most funding agreements and is vital to successful project outcomes.



4.5 Spine Street Park 2018 – 2020

Spine Street Park is an area of about 8-9 ha, situated in Sumner Park. Although surrounded by industrial development, it contains high environmental values. In the lower confines of the Bullockhead Creek, it forms part of a major wildlife corridor from the Brisbane River through to Pooh Corner Bushland Reserve, Wacol Bushlands and the Greenbank / Flinders Ranges.

Current projects are funded by Queensland Department of Environment Science Community Sustainability Action Grants (CSAC17068), BCC Community Conservation Assistance Program (CCA grants) and supported by the BCC Creek Catchment Program. The CSAC17068 project has removed and treated broadleaf pepper trees, planted areas with natives where peppers have been removed, and conducts ongoing weed maintenance. Works are primarily done by paid contractors and follow-up maintenance work by BushWaCCers and Friends of BushWaCCers. The Friends of BushWaCCers trainees assisted with the planting over 2000 plants throughout Spine Street Park and clearing of weeds such as Lantana, broad leaf pepper, weedy vines, Chinese elm, wild tobacco, devils fig, castor oil etc. on site. WaCC have also held many community planting and weeding events throughout Spine Street Park.



Wetland rehabilitation at Spine Street Park

4.6 Wacol Station Road Park, Ongoing Project.

Wacol Station Rd Park is an area of about 10 ha, situated in Sumner. Although surrounded by industrial development, it contains high environmental values. In the upper confines of the Wolston Creek, it forms part of a major wildlife corridor from the Brisbane River through to Pooh Corner Bushland Reserve, Wacol Bushlands and the Greenbank / Flinders Ranges.

Friends of BushWaCCers trainees contributed to extensive weeding works on the site in 2019, focussing on removal of Chinese elm, cats claw creeper, and Lantana. They also prepared areas for planting, planting 367 plants including 80 of appropriate mixed shrubs and trees, and the rest of *Lomandra longifolia* and *L. hystrix*, focusing the creekside and water flow areas to manage erosion risk.

Ongoing projects on this site serve to consolidate Council work and investment, towards the ultimate goal of ecological restoration. Work is funded the BCC Community Conservation Assistance Program and supported by the BCC Creek Catchment Program.



4.7 Wolston-Bullockhead Creek Corridor Projects

The Wolston-Bullockhead Creek Corridor Project began within the lower reaches, which include government owned (mainly Brisbane City Council owned) parklands near Wolston Creek and lower Bullockhead Creek. Although surrounded by various types of development, this corridor contains high environmental values, forming part of a major wildlife corridor from the Brisbane River through to Pooh Corner Bushland Reserve, Wacol Bushlands and the Greenbank / Flinders Ranges.

Some of this area has received considerable Brisbane City Council and other funding for both weed control and revegetation works since 2003. Ongoing projects serve to consolidate Council work and investment, towards the ultimate goal of ecological restoration. Many weed control projects have been funded and conducted, with initial work done by paid contractors. Past and current works were funded by grants from various government sources and supported by the Brisbane City Council's Creek Catchment Program. Main project sites to date are Spine Street Park, Wacol Station Road Park, Wau Road Park, Wolston Creek Reserve and Wolston Road Park.

Recently, this project was extended to include the upper reaches of the corridor around Darra, Richlands, Ellen Grove and Forest Lake. Federal funding has enabled WaCC to commission an extensive fauna survey of Bullockhead Creek from Wacol to Forest Lake. It is due for completion by the end of 2020 and will establish important baseline data and information, so community and Council partners can prioritise their efforts to best protect and enhance habitat for native species. It will also provide a good indication of waterway health by determining the presence of certain fauna. Key outcomes include improved knowledge of ecosystem health in the Bullockhead Creek riparian zone and creation of a 2020 baseline for incidence and diversity of fauna and will also aid in the identification of threats to fauna.

The fauna survey will also improve community knowledge and skills that will enable future expansion of project works; improved extent and condition of important remnant habitat; improved corridor linkages and support for many native species; and increased community connection to their local environment and involvement in recovery actions. Anecdotal and historical evidence indicates the presence of some key significant species, such as Platypus and Saw-shelled turtle. This survey will confirm the presence of these and other key species and will include birds and mammals. This will establish important baseline data and information, so community and Council partners can prioritise their efforts to best protect and enhance habitat for species. It will also provide a good indication of waterway health by determining the presence of certain fauna.

Apart from proposed future projects upstream, we must keep our eye on the ball and also maintain previous works. Follow-up maintenance will be provided by BushWaCCers and Friends of BushWaCCers partnerships. To this end, we need more members who are willing to get involved and help with these activities.



4.8 Wolston Creek Bushland Reserve

Wolston Creek Bushland Reserve is an area of about 47 ha situated in Riverhills, with high environmental values. In the lower confines of the Wolston Creek Catchment, it forms part of a major wildlife corridor from the Brisbane River through to Pooh Corner Bushland Reserve, Wacol Bushlands and the Greenbank / Flinders Ranges. The site is ex-prison farmland, which was transferred to Brisbane City Council in 2003. In the 20th century, much of the original vegetation was removed as part of past farming practices. Fortunately, some remnant vegetation remains. However, weed invasion continues to impact the reserve and its' biodiversity values.

The reserve has received considerable government funding (mostly from Brisbane City Council) for both weed control and re-vegetation works (Two Million Trees Project) since 2003. Ongoing projects serve to consolidate previous work and investment, towards the ultimate goal of ecological restoration. Many previous WaCC projects have been successfully completed; with initial works done by paid contractors and follow-up maintenance by Wolston Creek Bushcare Group in partnership with BushWaCCers and Friends of BushWaCCers.

The Wolston Creek Bushcare Group provides steady stewardship for the reserve. It is made up of a small but dedicated handful of people who continue to contribute over 500 volunteer hours per year. Councils Habitat Brisbane Program also provides on-going funding and contractor support to the group for equipment and on-going weed control. Some of the group projects include the Open Grassy Woodland Natural Regeneration Project and the WaCC Flora Database.



10 years on from 2 Million Trees planting project, and maintenance by WaCC grants.

4.9 Wolston Road Park, Ongoing Project

Wolston Road Park (WRP) is an area of about 15 ha, situated in Sumner. Although surrounded by industrial development, it contains high environmental values. In the lower confines of the Bullockhead Creek, it forms part of a major wildlife corridor from the Brisbane River through to Pooh Corner Bushland Reserve, Wacol Bushlands and the Greenbank / Flinders Ranges.

As one of the focal sites for the Friends of BushWaCCers, the trainees contribute to large scale weed removal including: Lantana, Glycine, Brazilian nightshade, Chinese elm, Castor oil, devils fig, wild tobacco, umbrella sedge, cobblers pegs, Dyschoriste, and more. Over 3500 plants have been planted at WRP by the SQW trainees, supplied by BCC and SOWN. The plant list includes: *Streblus brunonianus*, *Juncus usitatus*, *Cyperus polystachyos*, *Lomanda hysrix*, *L. longifolia*, *Acacia maidenii*, *A fimbriata*, *A disparrima*, *Alphitonia excelsa*, *Eucalyptus moluccana*, *E tereticornis*, *Casuarina cunninghamiana*, *Dianella caerulea*, *Lophostemon suaveolens*, *Ficus coronata*, *Trema tomentosa* and *Commersonia bartramia*.

The site is currently maintained by SQW trainees, WaCC volunteers, and contractors through the Lord Mayor's Environment Grant (ENV18-19330) and supported by the BCC Creek Catchment Program. Ongoing projects on this site serve to consolidate BCC work and investment, towards the ultimate goal of ecological restoration and we look forward to continuing to improve the ecological values of this site.



4.10 Wood Park Ongoing Restoration Project

The Wood Park Restoration Project is located within the riparian vegetation area of a gully, which eventually flows into the Brisbane River. The gully is located in Wood Park (formerly Naver Street Park), Middle Park QLD 4074. WaCC was once again successful in receiving a grant for Wood Park through the Lord Mayor's Community Sustainability and Environmental Grants program (ENV18-19312). The project managed re-invasion of weeds and assisted native regeneration. The funding allowed significant works to be achieved on the ground through contractors and volunteers.

A very successful volunteer planting day was carried out for National Tree Day 2018, with over 40 volunteers attending, from WaCC, Dera Sacha Sauda, Scouts, and the local community. Volunteers planted 200 plants on the site including watering, tree guarding, and mulching. Regular maintenance works were carried out by contractors and WaCC volunteers, including regular weeding, watering, and mulching. The Friends of BushWaCCers (MDA) trainees also contributed to maintenance of Wood Park by distributing mulch, watering natives, and weeding. We look forward to continuing to restore Wood Park into the future.



5 Our facilities - Pooh Corner Environment Centre, Coordinator's Report



COVID-safe seating arrangements under Stage 3 easing from July

WaCC has been operating the Pooh Corner Environment Centre (PCEC) since 2015 under a licence with Brisbane City Council (BCC) who owns the facility.

BCC has renewed the licence until 25 July 2022. WaCC uses the facility in conjunction with and on behalf of its PCEC partner groups, Centenary and District Environment Action (CDEA) and Friends of Pooh Corner (FoPC).

WaCC has a PCEC subcommittee whose members are Ed Parker (PCEC Coordinator), Shealagh Walker and Julie Vejle. The subcommittee meets quarterly or as required and reports to the WaCC management committee on operational and maintenance matters.

From March through to June 2020, the COVID-19 lockdown curtailed public usage of the facility. Once lockdown restrictions were lifted usage of PCEC re-commenced in July 2020, operating under Brisbane City Council's COVID-SAFE Work Procedure for volunteer activities.

In addition to providing a base for WaCC's activities, the PCEC facility has been made available for use by other organisations and local community groups under hire arrangements.

WaCC has partnered with Challenge Employment as from November 2020 and continuing into 2021. As part of these arrangements, Challenge will be making use of PCEC under a scheduled timetable for indoor training coursework.

6 Accountants financial statements



Income and Expenditure Statement

Wolston and Centenary Catchments Inc
For the year ended 30 June 2020

	2020	2019
Income		
Donations	35.00	50.00
Grant Income	33,083.73	50,385.95
Interest Received	290.58	733.18
Membership	210.00	120.00
Other Income	1,300.00	1,003.29
Total Income	34,919.31	52,292.42
Total Income	34,919.31	52,292.42
Expenditure		
Accountancy	1,754.60	1,127.50
Administration	3,595.00	2,474.20
Bank Fees & Charges	9.95	-
Catering Expenses	165.23	-
Cleaning	137.81	-
Depreciation	195.90	854.02
Entertainment	-	475.45
Equipment Fitting	109.51	1,727.28
General Expenses	-	199.24
Insurance	200.00	200.00
Motor Vehicles	160.00	161.33
Plants & Regeneration	32,665.16	61,751.47
Postage	134.00	130.00
Printing & Stationery	217.40	196.73
Registrations, Licences & Permits	232.85	55.35
Rent	-	460.00
Repairs and Maintenance	-	110.00
Staff Amenities	78.02	-
Subscriptions	67.74	489.60
Telephone & Internet	258.00	825.00
Total Expenditure	39,981.17	71,237.17
Current Year Surplus / (Deficit)	(5,061.86)	(18,944.75)

Detailed Statement of Financial Position

Wolston and Centenary Catchments Inc
As at 30 June 2020

	NOTES	30 JUN 2020	30 JUN 2019
Assets			
Current Assets			
Cash and Cash Equivalents			
Community Access Account		3,467.59	2,428.11
WACC Restricted Fund Account		35,232.71	41,138.15
Total Cash and Cash Equivalents		38,700.30	43,566.26
Total Current Assets		38,700.30	43,566.26
Non-Current Assets			
Plant and Equipment			
Plant & Equipment		1,907.02	1,907.02
Less Accumulated Depreciation on Plant & Equipment		(1,449.92)	(1,254.02)
Total Plant and Equipment		457.10	653.00
Total Non-Current Assets		457.10	653.00
Total Assets		39,157.40	44,219.26
Net Assets		39,157.40	44,219.26
Member's Funds			
Current Year Earnings		(5,061.86)	(18,944.75)
Retained Earnings		44,219.26	63,164.01
Total Member's Funds		39,157.40	44,219.26

Note: the complete Financial Report is available on request from the Secretary or Treasurer of WaCC.