

# Wolston and Centenary Catchments Inc.

## 2018 Annual Report



***“Our Catchments, Our Community, Our Commitment”***

Wolston and Centenary Catchments Inc.

ABN: 71 255 469 038

100 Wolston Road

Wacol, Queensland 4076

Email: [info@wacc.org.au](mailto:info@wacc.org.au)

Website: [www.wacc.org.au](http://www.wacc.org.au)

### **Cover image**

Kookaburras at Wood Park Restoration Project Site. Photo by WaCC member Katrin Lowe.

## President's Address

Acknowledgement of Traditional Owners and Country:

I would like to acknowledge the Traditional Owners of this land, and pay respects to their Elders, past and present and also the young leaders of tomorrow.

Firstly I would like to thank everyone for joining us at Wolston and Centenary Catchments' (WaCC) Annual General Meeting. Thank you for taking the time out of your busy schedule to show your support for your community. It has been another great year for WaCC. Our members have been successful in securing many grants for on ground projects throughout the catchments, and for facility improvements at Pooh Corner Environment Centre (PCEC). I would like to congratulate everyone for their success.

We have welcomed fresh new faces to our committee this year, and their new perspectives and ideas have been extremely valuable. Nicholas Moran (Vice President) and Suphak Sutheepattalawan (Treasurer) have been a great addition to the team and I would like to thank them for their hard work and commitment to WaCC's objectives and ideals. Our former Treasurer, Jessica David, had to unfortunately leave, but in her time with us she was able to provide WaCC with a new and improved financial system. We are very grateful for all that she did for WaCC, and her hard work allowed for a smooth transition for Suphak to take over.

I would also like to thank our more long standing members and committee that form the backbone of WaCC. You are each invaluable to the success of our group. Our Secretary Lenore Bracey yet again has given many hours of her life making sure WaCC is running smoothly. Ed Parker forms an integral connection to the community and WaCCs history, as does Shealagh Walker. Julie Vejle has been successful in receiving the largest amount of funds from grants this year and plays an important role in keeping our on ground works flowing. Many more volunteers make up the WaCC community and we have been fortunate to have the assistance of many volunteers. I would like to thank you all for making our events a great success this year, with a special mention to volunteers from Dera Sacha Suada and Scouts for your continuing support. A big thank you also goes out to our Birsbane City Council Creek Catchment Officer, Donna Edwards, for helping us with our project and connecting us with much needed funding.

Our members ran three community events specifically for Peaks to Points Festival. Ed Parker delivered the Spring Mountain Ridgetop Walk, Julie Vejle ran the nature walk at Wolston Creek Bushland Reserve, and I ran a community planting day at Wood Park. Congratulations to all for running successful events.

This year has seen a large amount of on ground works. Our volunteers have again applied for and completed many successful grants throughout the Wolston and Centenary region. These include large scale bush regeneration to promote healthy connectivity from the creeks to the river, important weeding projects to encourage and support native vegetation growth, and community planting events and gatherings to strengthen the connection with community and our green spaces. For the first time this year, WaCC collaborated with Multicultural Development Australia (MDA Ltd), who helped contribute thousands of hours of bush regeneration throughout our catchment

For the third year in a row now we have produced an annual report that showcases our achievements for the year. This is no small feat and I would like to thank the committee for contributing to the annual report.

Every single person has an important role to play. From committee members to financial members, and volunteers throughout the community, your support is extremely valuable in ensuring WaCCs continued success. We greatly value our current partners and collaborators and are open to discuss future partnerships. I encourage you, and anyone you know to join us, in any way you can to help us achieve our goals of protecting and enhancing the natural values of the Wolston and Centenary Catchments.

*Katrin Lowe - President*

# Contents

## Table of Contents

President's Address .....	3
1. Our Catchments .....	6
Map of Wolston and Centenary Catchments .....	7
2. Wolston and Centenary Catchments Inc. ....	8
<b>2.1 History</b> .....	<b>8</b>
<b>2.2 Mission Statement</b> .....	<b>8</b>
<b>2.3 Membership</b> .....	<b>9</b>
<b>2.4 The Management Committee</b> .....	<b>10</b>
3. Reports .....	11
<b>Year in Review</b> .....	<b>11</b>
Community Events.....	11
Marketing and Communications.....	13
Volunteer Engagement.....	13
4. Our Projects (in alphabetical order).....	14
4.1 BushWaCCers, ongoing project 2017-2018.....	14
4.3 Wolston-Bullockhead Creek Corridor, Ongoing project.....	16
4.3.2 Wacol Station Road Park, Ongoing Project.....	18
4.3.3 Wau Road Park, Centenary Village, Darra.....	18
4.3.4 Wolston Road Park, Ongoing Project. ....	19
4.3.5 Wolston Creek Bushland Reserve.....	20
5. Our Facilities .....	22
6. Accountant's Financial Statements.....	24

# 1. Our Catchments

**The Wolston and Centenary catchments** consist of Wolston Creek and its sub-catchments and various other creeks and their catchments in the Centenary and surrounding suburbs, which feed directly into the Brisbane River. Together, these catchments are 66 square kilometres in size and are located within Brisbane, Ipswich and Logan City Council areas.

**The Wolston Creek Catchment area** is 44 square kilometres. Wolston Creek forms the downstream part of the catchment, which flows, into the Brisbane River. Feeding into Wolston Creek at Sumner Park are its three tributaries, Ric Natrass Creek, Bullockhead Creek and Sandy Creek, which have their respective sources in Richlands and the Greenbank Military Training Area 11 kilometres to the south. Much of the vegetation found in this area has been classified as Endangered Regional Ecosystems. This classification means that the plant species and the soil type in the bushland reserves are rare and significant.

**The Centenary Catchments** have a combined area of 22 square kilometres and consists of two main creeks, Mount Ommaney Creek and Jindalee Creek. There are several other minor, unnamed creeks and sub-catchments, which flow separately into the Brisbane River. This area is highly urbanised, mainly residential but with natural bushland reserves along the Brisbane River, creeks and other locations.

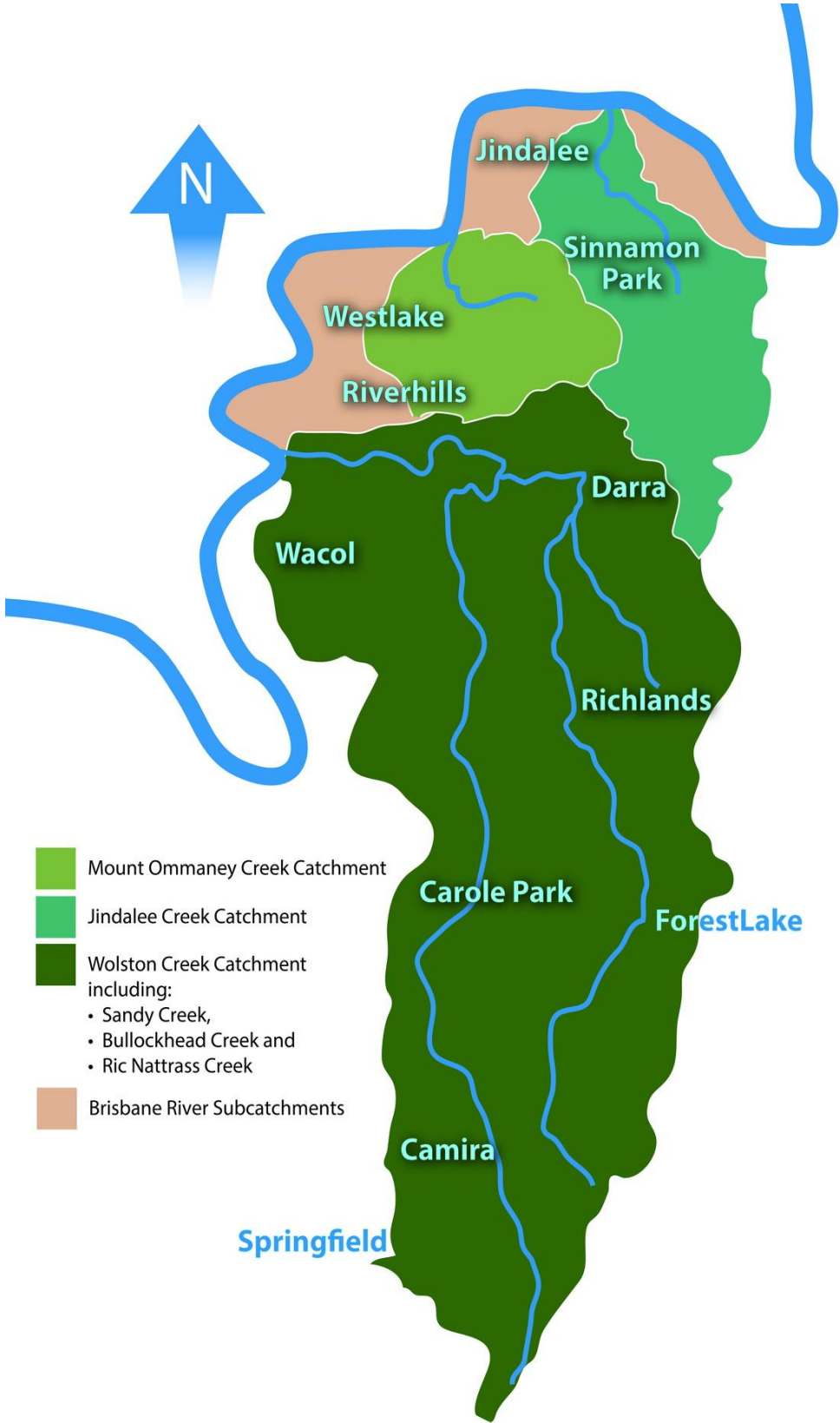
The catchments include all or part of the following suburbs:

Jindalee, Mount Ommaney, Westlake, Seventeen Mile Rocks, Jamboree Heights, Riverhills, Sinnamon Park, Middle Park, Sumner, Wacol, Ellen Grove, Richlands, Gailes, Carole Park, Darra, Forest Lake, Camira and Springfield.

The significant natural assets in Wolston and Centenary catchments include:

Wolston Creek Bushland Reserve, Pullen Reach Bushland Reserve, Rocks Riverside Park, Mount Ommaney Bushland Reserve, Edenbrooke Park, Pooh Corner Bushland Reserve and Wacol Bushland Reserve.

# Map of Wolston and Centenary Catchments



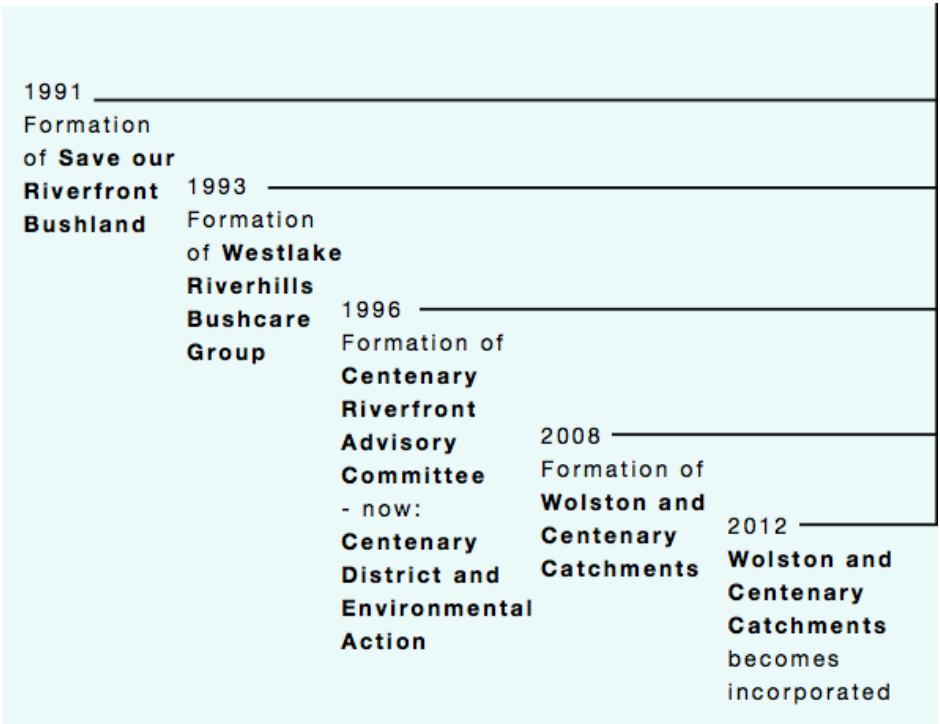
# 2. Wolston and Centenary Catchments Inc.

## 2.1 History

WaCC was formed in 2008 as the community-based catchment group to oversee and drive the community's involvement in protecting and enhancing the environment in the area covered by the Wolston and Centenary Catchments. In 2012 the group was formally incorporated and a new management team appointed.

WaCC acknowledges a number of organisations and volunteers who were instrumental in getting WaCC started. Some of these are: Brisbane City Council, Centenary Districts Environment Action Group, Friends of Pooh Corner, Save Our Riverfront Bushland, and Wolston Creek Bushcare Group.

### Timeline of WaCC



## 2.2 Mission Statement

To protect and enhance the natural environment and resources within and around Wolston and Centenary Catchments.



## 2.3 Membership

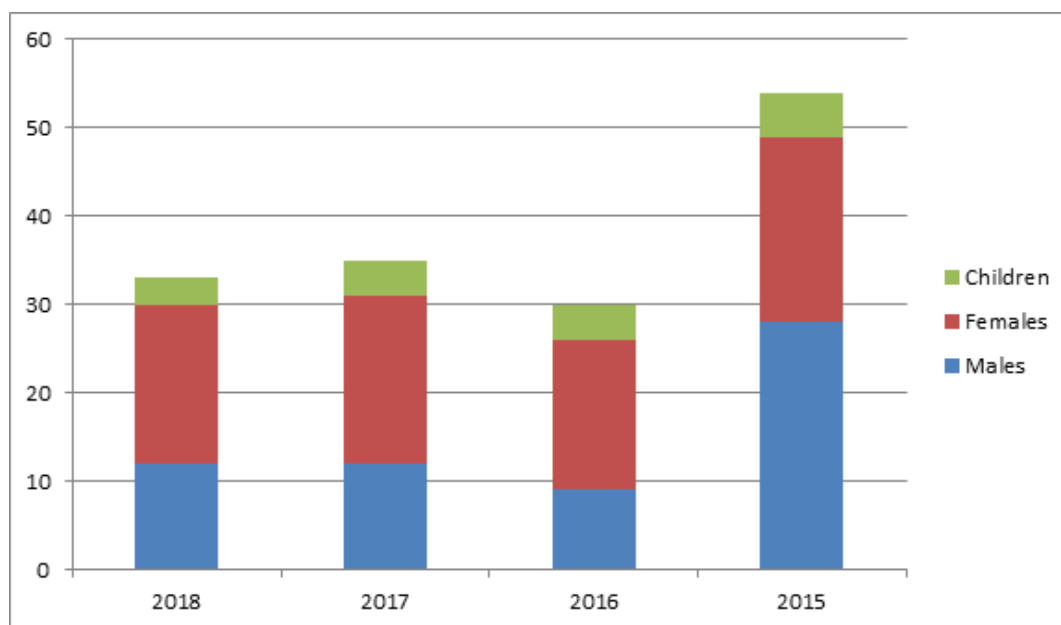
Membership for WaCC is defined by an annual financial payment and is open to individuals, households and corporations. The present membership consists of 33, with eligible voting members numbering 30. There have ongoing discussions held at various Management Committee Meetings to review the nature and the definition of 'Membership'.

The table below outlines the membership for each year Lenore Bracey has been Secretary for WaCC and Membership Secretary up to the 2018 AGM.

The core membership numbers, overall, have remained roughly the same over the four years. The exception is the larger male and female membership numbers in 2015 and a slight drop in both male and female members in 2016.

The larger numbers of male memberships in 2015 was due to 15 members signing up from a local business but only for one year. There is no obvious explanation for the increased female membership in 2015 and it bears no relationship to the increased male membership numbers. It is most likely that more females joined during the large Everyone's Environment Grant Project.

### WaCC Financial Membership - 2015 to 2018



	<b>Males</b>	<b>Females</b>	<b>Children</b>
<b>2018</b>	12	18	3
<b>2017</b>	12	19	4
<b>2016</b>	9	17	4
<b>2015</b>	28	21	5

## 2.4 The Management Committee

The WaCC Management Committee consists of five members who oversee the management of all WaCC administration and policies and a sub-committee that manages the ongoing facility maintenance and fittings of the Pooh Corner Environment Centre.

WaCC said farewell and thank you to Jess Scott as Treasurer earlier in the year as she wanted to commit fully to her new paid job. We then welcomed Kris into the Treasurer Role. Kris has grasped the work quickly and efficiently, learning to use MYOB for the first time.

WaCC was also pleased to gain Nicholas into the role of Vice-President just following the AGM in 2017. Nicholas is a welcome new voice on our committee to add new ideas and suggestions.

The present Management Committee is as follows:

**President:** Katrin Lowe  
**Vice-President:** Nicolas Moran  
**Secretary:** Lenore Bracey  
**Treasurer:** Suphak Sutheepattalawan (Kris)  
**Committee Member:** Ed Parker

The PCEC sub-committee is as follows:

**PCEC Coordinator:** Ed Parker  
**Sub-Committee Members:** Julie Vejle and Shealagh Walker

## 3. Reports

### Year in Review

#### Community Events

WaCC Inc has been involved in a number of events throughout the year engaging with the community and developing partnerships with local groups.

Members from WaCC and the community participated in **Clean up Australia Day** in March, which was held in the vicinity of Ric Natrass Creek, Darra and resulted in the removal of a large amount of rubbish from a key site within Wolston Catchment. WaCC also participated in **Peaks to Points Festival**, hosted by Oxley Creek Catchment Association. WaCC held three events: Spring Mountain Ridgetop Walk (photo below), Wolston Creek Bushland Reserve Walk, Tree planting (also National Tree Day). We also held an **End of Year Celebration (2017)** in partnership with Centenary Districts Environment Action (CDEA). Guided bush walks and bird walks and Children's craft activities were held.



## Peaks 2 Points - nature walk at Wolston Creek Bushland Reserve

One of our WaCC volunteers, Julie Vejle, conducted a 2.6km nature walk on July 28 at Wolston Creek Bushland Reserve, Riverhills in conjunction with Wolston Creek Bushcare Group (WCBG). Nine people attended, starting from the Riverfront Boulevard entrance and finishing at the Sawmill Circuit entrance. It was a glorious winter's day and some great connections were forged, including the follow-up formation of a new bushcare group at Centenary Village in Darra. Most participants were in awe of what was seen and experienced. Some commented that the (47ha) reserve is a hidden gem. It is surrounded by riparian tracts (Wolston Creek and Brisbane River), power easements and housing.



While participants walked and talked, they saw various wildlife including Eastern grey kangaroo, Red-necked wallaby, Wedge-tailed eagle, Red-backed fairy wren and more. They also noted various aspects of the reserve. That is, the difference between remnant bushland and planted bushland, various plant communities including some flora rare to Brisbane. Participants also acknowledged the caretakers of the land, both past and present.

This included the Jagera people, the early colonial settlers and the ongoing land management work (mainly weed control) being conducted by WaCC and WCBG, in the form of contractors and volunteers. Contractor work is funded by grants from various government sources (mainly Council) and supported by the Brisbane City.



## Marketing and Communications

Improving social media and marketing has been a key focus for WaCC this year. Our utilisation of Facebook and other social media platforms has resulted in an increase in activity on the WaCC Facebook page, diversity in our approach to event marketing and access to a larger portion of the community.

The design and further upgrade in security of the WaCC website [www.wacc.org.au](http://www.wacc.org.au) was finalised this year by Paul Kingsnorth from Deepdesigner [www.deepdesigner.com.au](http://www.deepdesigner.com.au). The WaCC website is now fully functional, easier to administer and more secure.

Lenore Bracey is administrator of the WaCC website. Lenore has embarked on a steep learning curve and attempts to keep the website up to date and provide current information about the organisation. WaCC is thankful to have Paul Kingsnorth from Deepdesigner provide some training and support.

## Volunteer Engagement

WaCC has engaged over 170 volunteers this year through community planting days, Clean up Australia Day (photo below), BushWaCCers roving bushcare, bush walks, and other activities. WaCC welcomes all volunteers and supports the opportunity for members to apply for grants within our catchment and undertake formal project management roles.



## 4. Our Projects (in alphabetical order)

### 4.1 BushWaCCers, ongoing project 2017-2018

BushWaCCers is a roving bushcare group that was formed in 2017. The aim is to facilitate volunteer follow-up maintenance on various WaCC ecological restoration projects, through partnerships with various community groups. Follow up maintenance is a requirement of most funding agreements and is vital to successful project outcomes. WaCC is currently committed to follow-up maintenance work on any of six project sites: Spine Street Park, Wacol Station Road Park, Wau Road Park, Wolston Creek Bushland Reserve, Wolston Road Park and Wood Park.



BushWaCCers will ensure the success of our many environmental sites through regular weeding and maintenance. We look forward to BushWaCCers growing as a group and invite you all to join us in improving the environmental value of the bushland in our backyard. Big thank you to volunteers from Dera Sacha Sauda (below right) and the Student Catchment Immersion program (below left).





## 4.2 Friends of BushWaCCers, Skilling Queenslanders for Work, 2017-2018

For the first time, WaCC partnered with Multicultural Diversity Australia (MDA Ltd) in 2018, to deliver on ground training to trainees from culturally and linguistically diverse (CALD) backgrounds. MDA secured the funding for this Skilling Queenslanders for Work project titled “Friends of BushWaCCers”. This funding provided a paid supervisor and engaged Greening Australia to deliver training modules. WaCC also provided volunteers, and access to the Pooh Corner Environment Centre for storage of tools and a place to meet for work every day. Conservation Volunteers Australia (CVA) generously donated tools for the project. Additionally, volunteer time was provided by allowing WaCC to strengthen its relationship with CVA.

Twelve trainees undertook a traineeship in Certificate 1 Conservation and Land Management from May – October 2018. They carried out weeding and/or planting throughout Wolston Creek Bushland Reserve, Wolston Road Park, Spine Street Park, Wacol Bushland, and Wood Park. With many people working every day, they have been able to achieve amazing results for one of the most important green corridors in our catchment. The next cohort of trainees will continue on ground works from October 2018 - March 2019.



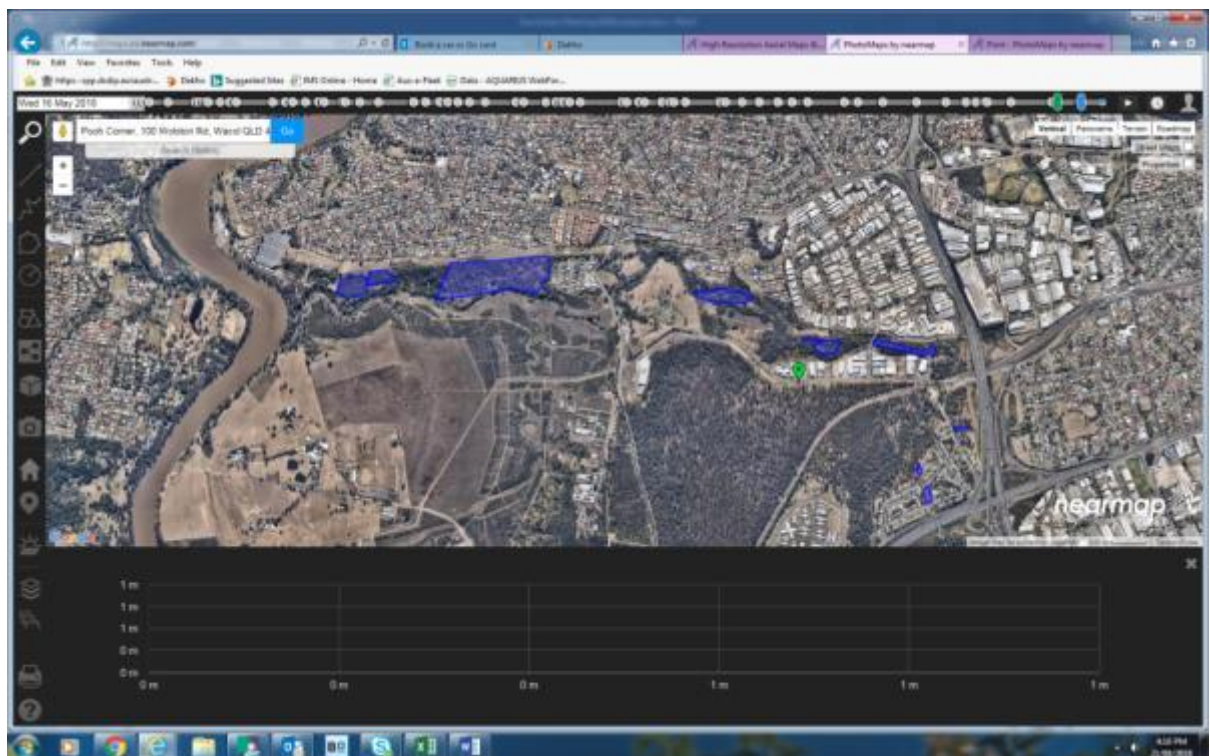
Flow on effects of the collaboration is that it facilitated volunteer follow-up maintenance work on various ongoing WaCC ecological restoration projects. Such work is a requirement of most funding agreements and is vital to successful project outcomes.

MDA is currently committed to working on any of six project sites: Spine Street Park, Wacol Station Road Park, Wau Road Park and Wolston Creek Reserve, Wolston Road Park and Wood Park.

## 4.3 Wolston-Bullockhead Creek Corridor, Ongoing project

The Wolston-Bullockhead Creek Corridor includes government owned (mainly Brisbane City Council owned) parklands near Wolston Creek and lower Bullockhead Creek. Although surrounded by various types of development, this corridor contains high environmental values, forming part of a major wildlife corridor from the Brisbane River through to Pooh Corner Bushland Reserve, Wacol Bushlands and the Greenbank / Flinders Ranges.

Some of the area has received considerable Council and other funding for both weed control and revegetation works since 2003. Ongoing projects serve to consolidate Council work and investment, towards the ultimate goal of ecological restoration. Many weed control projects are in progress, with initial work done by paid contractors. Seven current projects are in progress, with work done by paid contractors and follow-up maintenance work by BushWaCCers and Friends of BushWaCCers. Work is funded by grants from various government sources and supported by the Brisbane City Council's Creek Catchment Program. Main project sites are Spine Street Park, Wacol Station Road Park, Wau Road Park, Wolston Creek Reserve and Wolston Road Park. These areas are shown in blue filling in the map below and then discussed individually.





#### 4.3.1 Spine Street Park, Ongoing Project: CSAC 17068

Spine Street Park is an area of about 8-9ha, situated in Sumner Park. Although surrounded by industrial development, it contains high environmental values. In the lower confines of the Bullockhead Creek, it forms part of a major wildlife corridor from the Brisbane River through to Pooh Corner Bushland Reserve, Wacol Bushlands and the Greenbank / Flinders Ranges.

Ongoing projects on this site serve to consolidate Council work and investment, towards the ultimate goal of ecological restoration. Two current projects are in progress, with work done by paid contractors and follow-up maintenance work by BushWaCCers and Friends of BushWaCCers. Work is funded by grants from various government sources and supported by the Council Creek Catchment Program.



### **4.3.2 Wacol Station Road Park, Ongoing Project.**

Wacol Station Rd Park is an area of about 10ha, situated in Sumner. Although surrounded by industrial development, it contains high environmental values. In the upper confines of the Wolston Creek, it forms part of a major wildlife corridor from the Brisbane River through to Pooh Corner Bushland Reserve, Wacol Bushlands and the Greenbank / Flinders Ranges. Ongoing projects on this site serve to consolidate Council work and investment, towards the ultimate goal of ecological restoration.

One current project is in progress, with work done by paid contractors and follow-up maintenance work by BushWaCCers and Friends of BushWaCCers. Work is funded by grants from various government sources (mostly council) and supported by the Council Creek Catchment Program.

### **4.3.3 Wau Road Park, Centenary Village, Darra**

Wau Road Park is an area of about 5ha, situated in Darra. It is surrounded by residential development and is close to two major arterial roads and therefore has high community engagement values. In the mid-lower confines of the Bullockhead Creek, it forms part of a major wildlife corridor from the Brisbane River through to Pooh Corner Bushland Reserve, Wacol Bushlands and the Greenbank / Flinders Ranges. Ongoing WaCC projects on this site serve to consolidate Council work at the adjoining Wacol Bushlands, with the ultimate goal of ecological restoration.

No projects are currently in progress, with previous work done by paid contractors and follow-up maintenance by BushWaCCers and Friends of BushWaCCers. Work was funded by grants from various government sources and supported by the Council Creek Catchment Program.

#### 4.3.4 Wolston Road Park, Ongoing Project.

Wolston Road Park is an area of about 15ha, situated in Sumner. Although surrounded by industrial development, it contains high environmental values. In the lower confines of the Bullockhead Creek, it forms part of a major wildlife corridor from the Brisbane River through to Pooh Corner Bushland Reserve, Wacol Bushlands and the Greenbank / Flinders Ranges. Ongoing projects on this site serve to consolidate Council work and investment, towards the ultimate goal of ecological restoration. Two current projects are in progress, with the heavy lifting done by paid contractors and follow-up maintenance work by BushWaCCers and Friends of BushWaCCers. Work is funded by grants from various government sources and supported by the Council Creek Catchment Program.





#### 4.3.5 Wolston Creek Bushland Reserve.

##### **The Lord Mayor's Community Sustainability and Environmental Grants Program (2017-2018), ENV17-18282, ENV17-18283.**

Wolston Creek Bushland Reserve is an area of about 47ha situated in Riverhills, with high environmental values. In the lower confines of the Wolston Creek Catchment, it forms part of a major wildlife corridor from the Brisbane River through to Pooh Corner Bushland Reserve, Wacol Bushlands and the Greenbank / Flinders Ranges.

The site is ex-prison farmland, which was transferred to Brisbane City Council in 2003. In the 20th century, much of the original vegetation was removed as part of past farming practices. Fortunately some remnant vegetation remains. However, weed invasion continues to impact the reserve and its' biodiversity values.

The reserve has received considerable government funding (mostly from Council) for both weed control and re-vegetation works since 2003. Ongoing projects serve to consolidate previous work and investment, towards the ultimate goal of ecological restoration.

Two current projects are in progress, with work done by paid contractors and follow-up maintenance work by BushWaCCers and Friends of BushWaCCers. Work is funded by grants from various government sources (mostly Council) and supported by the Council Creek Catchment Program.

Projects are currently managed by Katrin Lowe (WaCC President) in partnership / collaboration with Julie Vejle (Wolston Creek Bushcare Group Coordinator). Kat and Julie are passionate about restoring this valuable Bushland Reserve.



## 4.4 Wood Park Ongoing Restoration Project

### **The Lord Mayor's Community Sustainability and Environmental Grants Program (2017-2018), ENV17-18280.**

The Wood Park Restoration Project is located within the riparian vegetation area of a gully, which eventually flows into the Brisbane River. The gully is located in Wood Park (formerly Naver Street Park), Middle Park QLD 4074. Phase 5 (ENV17-18280) aimed to manage re-invasion of weeds and plant 200 plants throughout the site. The funding allowed significant works to be achieved on the ground through contractors as well as volunteers workers.

A very successful volunteer planting day was carried out for National Tree Day, with over 40 volunteers attending, from WaCC, Dera Sacha Sauda, Scouts, and the local community. Volunteers planted 200 plants on the site including watering, tree guarding, and mulching. Regular maintenance works were carried out by contractors and WaCC volunteers, including regular weeding, watering, and mulching. The MDA trainees also contributed to maintenance of Wood Park by distributing mulch, watering natives, and weeding. We look forward to continuing to restore Wood Park into the future.



## 5. Our Facilities

### Pooh Corner Environment Centre, Coordinator's Report

#### Background

WaCC was granted use of the Pooh Corner Environment Centre (PCEC) in 2015 and manages the PCEC under a licence with Brisbane City Council (BCC). WaCC continues to operate the facility in conjunction with and on behalf of its present partner groups, Centenary and District Environment Action (CDEA) and Friends of Pooh Corner (FoPC).

Under the licence agreement, BCC identified the use of the premises as:

*The conduct of community catchment care activities.  
Training and education and associated administration and clubhouse functions.  
The operation of other recreational activities as approved by Council.*



BCC has renewed the licence to July 2019. Various funding sources have been utilised to furnish the Centre and to provide some maintenance and fittings. The PCEC subcommittee members, Ed Parker, Shealagh Walker and Julie Vejle, have contributed to this in many ways.



#### Usage of the Facility

In the year 2017-18, WaCC has continued use of the facility as a base for its administration, catchment work, community education and related activities.

◀ End-of-year celebration, with activities drawing in the local community.

Other groups, which periodically hire PCEC are: Queensland Mycological Society; and Centenary Photographic Community. As from May 2018, a major new user of PCEC as a base for their bushland revegetation and associated training (as reported elsewhere in this report – see section 4.2) was Multicultural Diversity Australia (MDA Ltd).



## Property Management and Governance

In 2017-18, WaCC undertook and responded to the following activities:

- **PCEC Subcommittee** – meets quarterly to review property management and facility governance matters for reporting to the WaCC executive;
- **Facilities Management documentation** – formalised and ongoing;
- **Fire safety** – installed fire extinguishing equipment and displayed statutory evacuation diagrams;
- **Performance evaluation** – responded to a BCC survey and met with staff for the first facility performance evaluation.
- **Fire Safety Audit** – BCC engaged a consultant to conduct a fire safety audit.

## Funding

WaCC secured a Lord Mayor's Suburban Initiatives Fund (LMSIF) funding for items for PCEC. The main item was a security/flyscreen door for the office door, installation of which was completed on 4 Oct 2018.

## Looking Forward

- Possibility of developing display material for enhancing PCEC's role as an engaging educational facility, with support from the BCC Catchments program funding;
- Further examination of options for attracting funding support to operate the facility;
- Further development of a facility maintenance plan and budget.



## 6. Accountant's Financial Statements

<b>Wolston and Centenary Catchments Incorporated</b> <b>ABN 71 225 469 038</b> <b>Income and Expenditure Statement</b> <b>For the year ended 30 June 2018</b>		
	2018 \$	2017 \$
<b>Income</b>		
Membership	235.00	250.00
Donations	10.00	
Grant Income	83,639.80	52,243.80
Interest received	745.01	295.84
Other income	3,313.91	260.00
<b>Total income</b>	<b>87,943.72</b>	<b>53,049.64</b>
<b>Expenses</b>		
Accountancy	990.00	2,420.00
Advertising & promotion	1,873.67	405.76
Administration	2,627.30	
Bookkeeping	265.25	105.00
Catering Expenses		180.27
Bank fees & charges		160.00
Computer Expenses	157.78	1,500.00
Event Presentation	589.97	
Consultants fees	3,164.00	3,761.96
Depreciation - Plant	400.00	571.00
General expenses		27.48
Gifts	100.00	150.00
Hire/Rent of plant & equipment		247.49
Insurance		251.70
Plants and Regeneration	44,115.06	15,494.94
M/V other - Other	148.83	
Postage	127.00	136.00
Printing & stationery	412.70	144.27
Rent on land & buildings	460.00	817.00
Repairs & maintenance	44.00	916.00
Staff amenities		351.22
Subscriptions	459.00	344.29
Telephone	738.90	
These financial statements are unaudited. They must be read in conjunction with the attached Accountant's Compilation Report and Notes which form part of these financial statements.		



**Wolston and Centenary Catchments Incorporated**  
**ABN 71 225 469 038**  
**Income and Expenditure Statement**  
**For the year ended 30 June 2018**

	2018 \$	2017 \$
<b>Total expenses</b>	56,673.46	27,984.38
<b>Profit from ordinary activities before income tax</b>	31,270.26	25,065.26
<b>Income tax revenue relating to ordinary activities</b>		
<b>Net profit attributable to the association</b>	31,270.26	25,065.26
<b>Total changes in equity of the association</b>	31,270.26	25,065.26
<b>Opening retained profits</b>	31,893.75	6,828.49
<b>Net profit attributable to the association</b>	31,270.26	25,065.26
<b>Closing retained profits</b>	63,164.01	31,893.75

**Note: the complete Financial Report is available on request from the Secretary or Treasurer of WaCC.**